

OUTSULATION® RAIL SYSTEM



An Exterior Wall Insulation and Finish System

DUK 663b

Outsulation® Rail System Installation Details

Timber Frame Structures

Table of Contents

Description	Drawing number	Revision
System cutaway	ORS-T-0.0.01	0
Vented and drained starter track	ORS-T-0.0.02	0
System cutaway – Expanded foam supports	ORS-T-0.0.03	0
Typical insulation slab layout	ORS-T-0.0.04a	0
Typical insulation slab layout at corners	ORS-T-0.0.04b	0
Slab profile	ORS-T-0.0.05	0
Holding track	ORS-T-0.0.06	0
T-Spline	ORS-T-0.0.07	0
Termination track	ORS-T-0.0.08	0
Termination above grade – Aluminium starter track	ORS-T-0.0.09	0
Set back window head	ORS-T-0.0.10	0
Set back window sill	ORS-T-0.0.11	0
Set back window jamb	ORS-T-0.0.12	0
Set forward window head	ORS-T-0.0.13	0
Set forward window sill	ORS-T-0.0.14	0
Set forward window jamb	ORS-T-0.0.15	0
System configuration at openings	ORS-T-0.0.16	0
Track layout at openings	ORS-T-0.0.17	0
Preparation of rough openings – Backstop NT/grid tape	ORS-T-0.0.18	0
Preparation of rough openings – AquaFlash and mesh	ORS-T-0.0.19	0
Expansion joint	ORS-T-0.0.20	0
Expansion joint at corner	ORS-T-0.0.21	0
Dryvit Fire Stop – Cutaway	ORS-T-0.0.22	0
Fire barrier detail	ORS-T-0.0.23	0
Dryvit Fire Stop – Overview	ORS-T-0.0.24	0
Parapet – Cap flashing	ORS-T-0.0.25	0
Penetrations – fixings for downpipes etc	ORS-T-0.0.26	0
Aesthetic reveals	ORS-T-0.0.27	0
Roof termination – Overhanging soffit	ORS-T-0.0.28	0

Note: Dryvit makes no representation regarding conformity of its suggestions to model building codes, engineering criteria, specific application details or project locations. All components indicated in the illustrations, as well as other that may be required for the integrity of the system shall be designed, detailed and engineered by a representative of the architect, owner or contractor to be in conformance with model codes, architectural and engineering requirements pertaining to specific building projects.

Dryvit makes no warranty, expressed or implied, as to the architectural design, engineering or workmanship of projects utilising Dryvit systems or products.

The liabilities of Dryvit shall be as stated in the Dryvit standard warranty. Contact Dryvit for a full and complete copy of this warranty.

DISCLAIMER

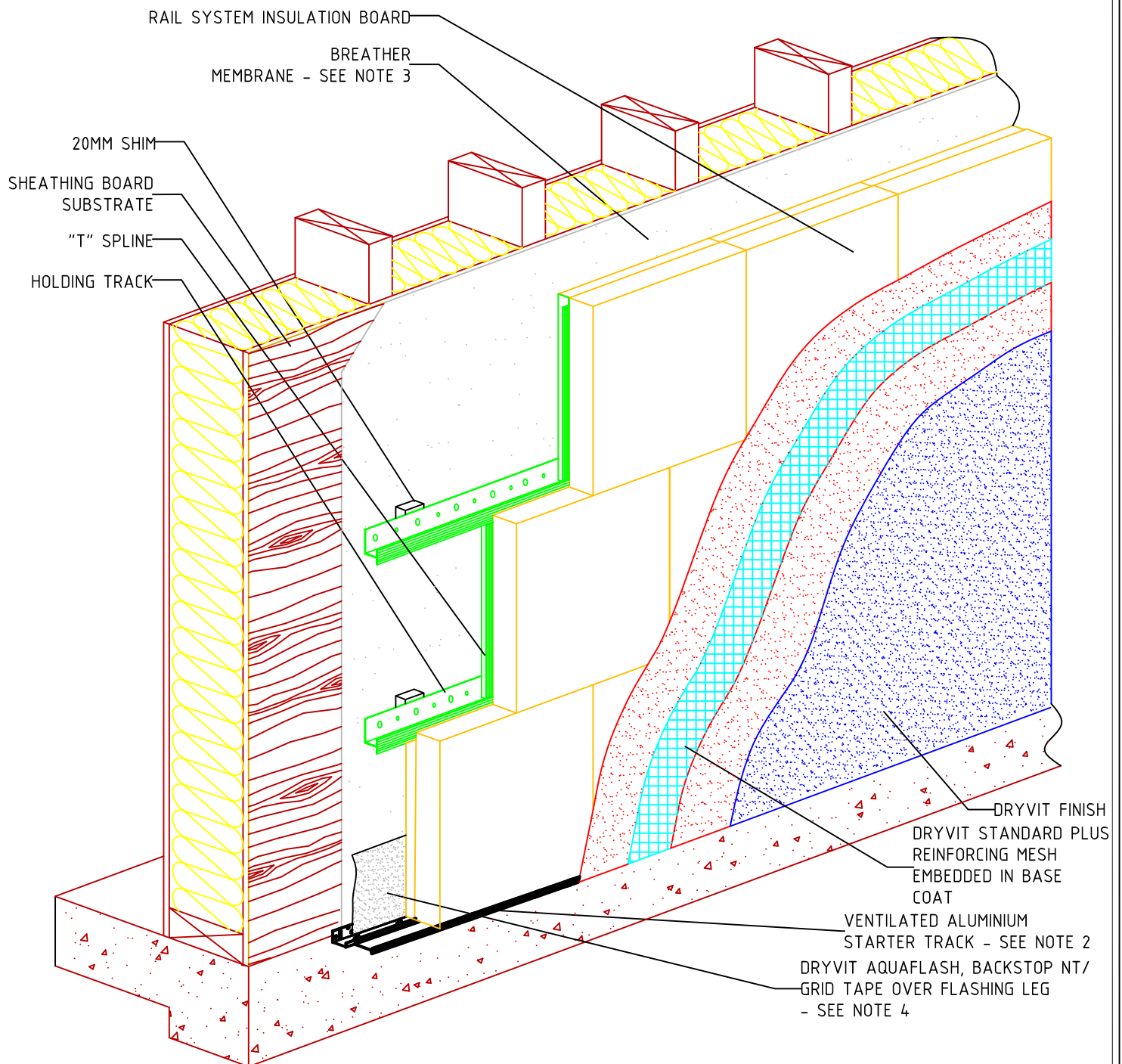
Information contained in this document conforms to standard details and product recommendations for the detailing of the Dryvit EWI System as of the date of publication of this document and is presented in good faith. Dryvit UK Ltd. assumes no liability, expressed or implied, as to the architecture, engineering or workmanship of any project. To ensure that you are using the latest, most complete information, contact Dryvit UK.

Dryvit UK Ltd, Unit 4 Wren Park, Hitchin Road, Shefford, Bedfordshire, SG17 5JD

Tel 01462 819555 Fax 01462 819556

www.dryvit.co.uk





Outsulation Rail System

Rail System Cutaway - Timber Framing

NOTE:

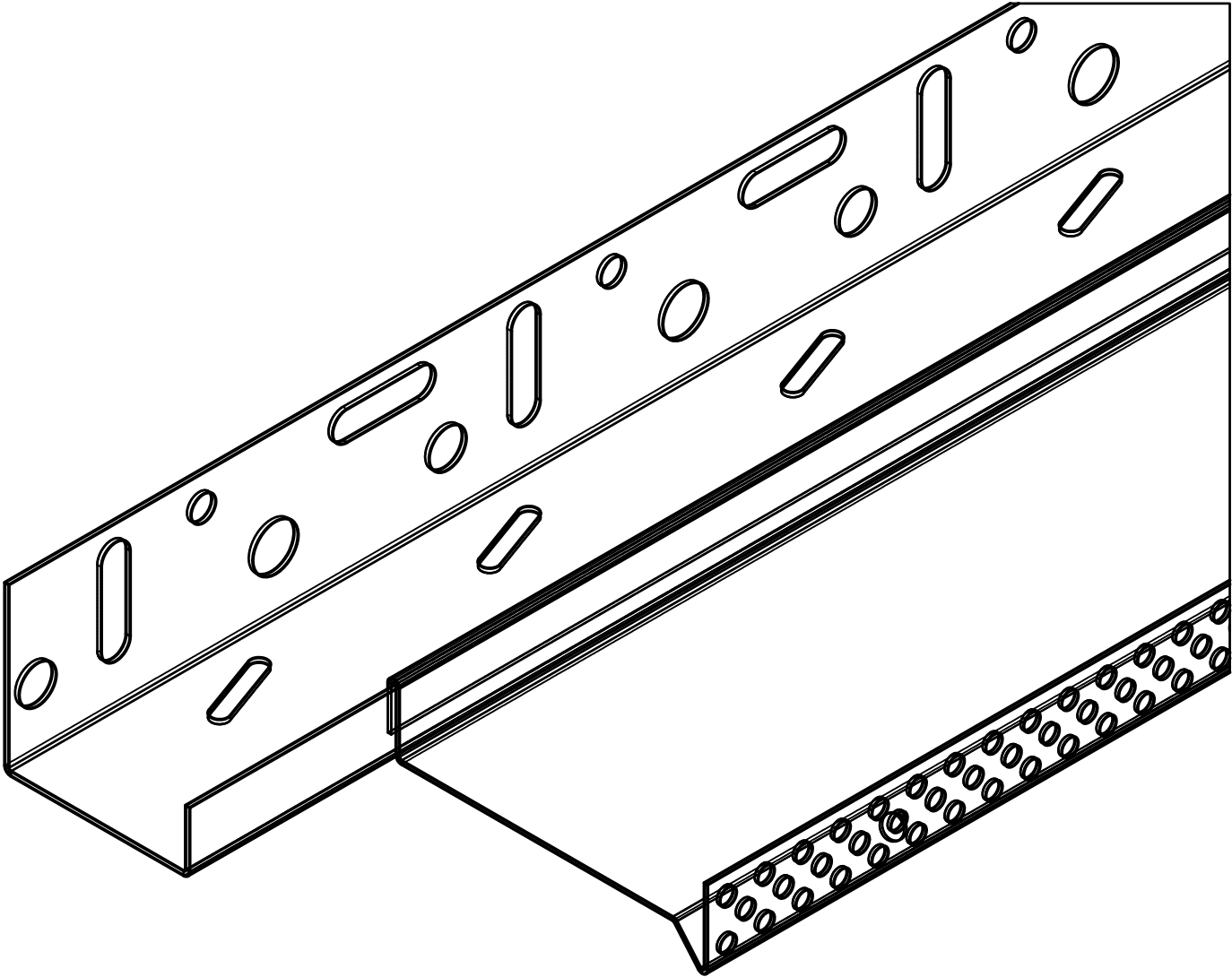
1. DRYVIT RECOMMENDS THAT GROUND FLOOR APPLICATIONS AND ALL FACADES EXPOSED TO ABNORMAL STRESS, HIGH TRAFFIC, OR DELIBERATE IMPACT HAVE THE BASE COAT REINFORCED WITH A PANZER MESH PRIOR TO STANDARD PLUS MESH. LOCATION OF HIGH IMPACT ZONES SHOULD BE INDICATED ON CONTRACT DRAWINGS.
2. STARTER TRACK WITH 17 OBOUNDS PER 2.5M LENGTH VENTILATION RATE 520 mm²/LM.

3. AS AN ALTERNATIVE TO A SHEET TYPE BREATHER MEMBRANE INSTALLED IN A WEATHER BOARD FASHION IN ACCORDANCE WITH BUILDING REGULATIONS AND MANUFACTURER'S REQUIREMENTS BACKSTOP NT MAY BE USED
4. SHEET MEMBRANE CAN BE LAPPED OVER VENTILATED ALUMINIUM STARTER TRACK UPSTAND AS ALTERNATIVE TO DRYVIT AQUAFASH WHERE BREATHER MEMBRANE IS INSTALLED AS PER NOTE 3 ABOVE

The architecture, engineering and design of the project using the Dryvit products is the responsibility of the project's design professional. All systems must comply with local building codes and standards. This detail is for general information and guidance only and Dryvit specifically disclaims any liability for the use of this detail and for the architecture, design, engineering or workmanship of any project. The project design professional determines, in its sole discretion, whether this detail or a functionally equivalent alternative is best suited for the project. Use of a functionally equivalent detail does not violate Dryvit's warranty. This detail is subject to change without notice. Contact Dryvit to insure you have the most recent version.



APPROVED BY:	REV:	DATE:
AW	0	05.05.17



Outsulation Rail System

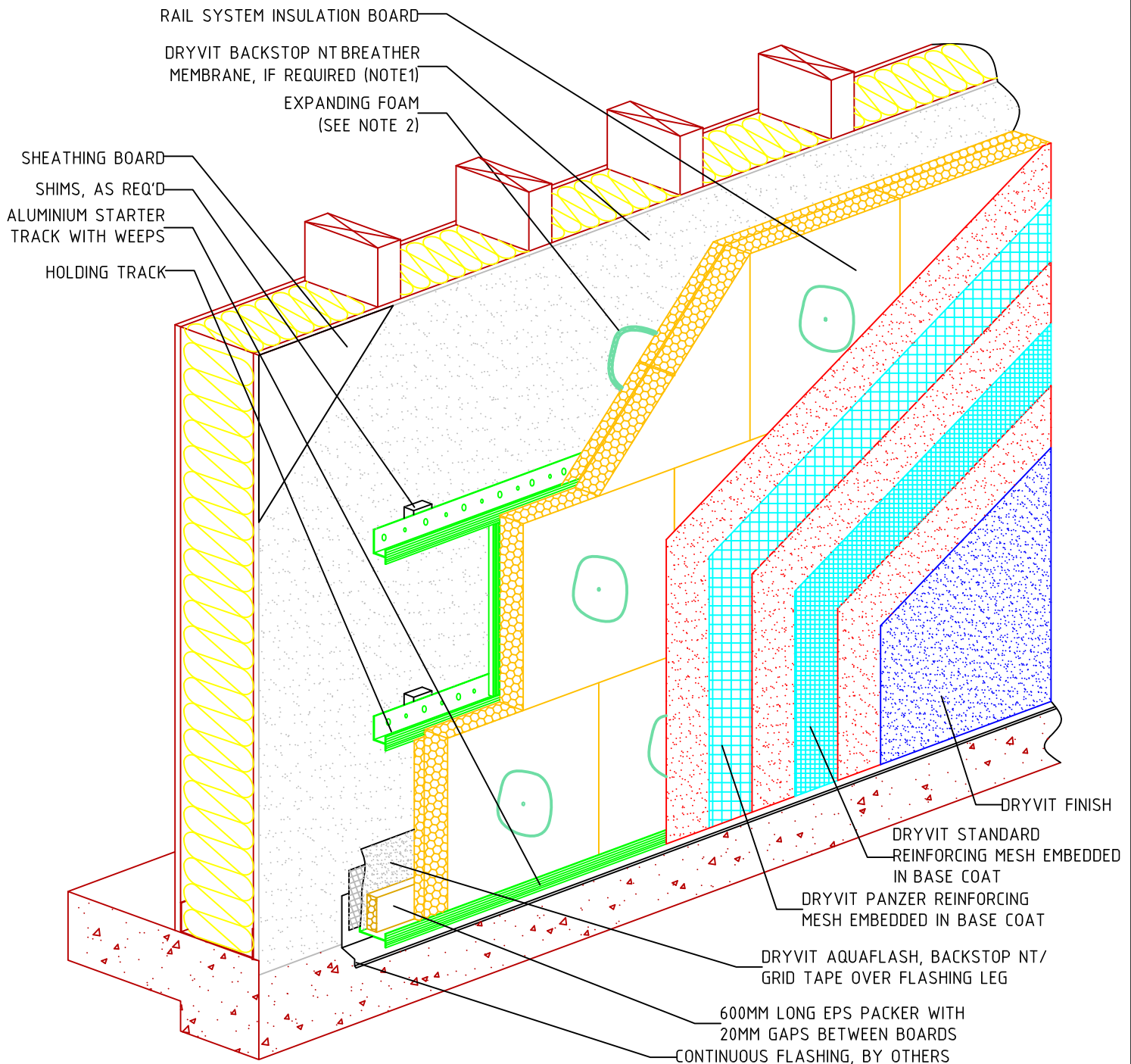
Ventilated Starter Track for Timber Frame

- NOTE:
- 1. STARTER TRACK WITH 17 OBROUNDS PER 2.5M LENGTH.
VENTILATION RATE 520 mm2/LM.
 - 2. CAVITY MINIMUM 20MM.

The architecture, engineering and design of the project using the Dryvit products is the responsibility of the project's design professional. All systems must comply with local building codes and standards. This detail is for general information and guidance only and Dryvit specifically disclaims any liability for the use of this detail and for the architecture, design, engineering or workmanship of any project. The project design professional determines, in its sole discretion, whether this detail or a functionally equivalent alternative is best suited for the project. Use of a functionally equivalent detail does not violate Dryvit's warranty. This detail is subject to change without notice. Contact Dryvit to Insure you have the most recent version.

APPROVED BY:	REV:	DATE:
AW	0	05.05.17





Outsulation Rail System Rail System Cutaway - Expanding Foam Support

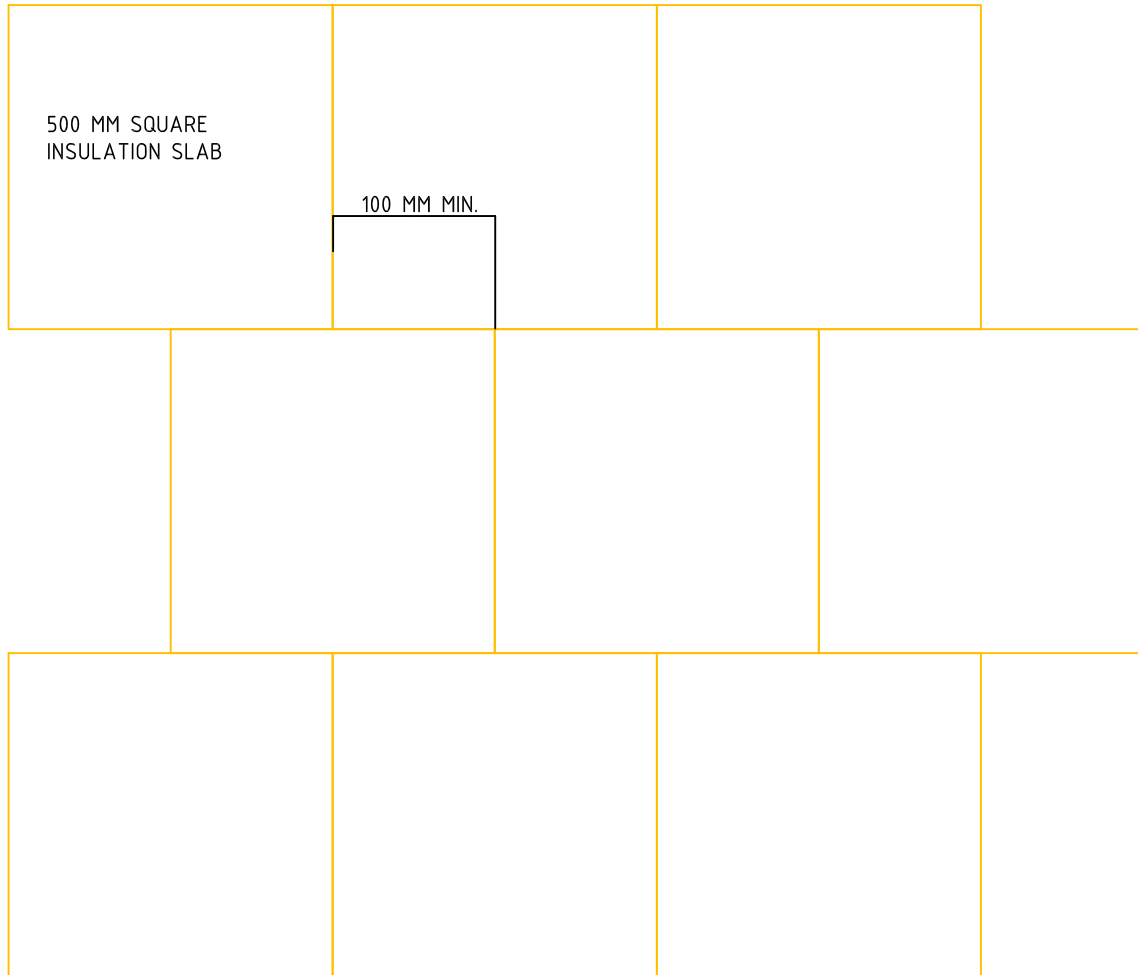
NOTES:

1. AS AN ALTERNATIVE TO BACKSTOP NT A SHEET TYPE BREATHER MEMBRANES MAY BE USED AND SHALL BE INSTALLED IN A WEATHER BOARD FASHION IN ACCORDANCE WITH CODE AND MANUFACTURER'S REQUIREMENTS
2. INSTALL EXPANDING FOAM THROUGH SMALL (6MM) HOLE AND FILL HOLE WITH EXPANDING FOAM

The architecture, engineering and design of the project using the Dryvit products is the responsibility of the project's design professional. All systems must comply with local building codes and standards. This detail is for general information and guidance only and Dryvit specifically disclaims any liability for the use of this detail and for the architecture, design, engineering or workmanship of any project. The project design professional determines, in its sole discretion, whether this detail or a functionally equivalent alternative is best suited for the project. Use of a functionally equivalent detail does not violate Dryvit's warranty. This detail is subject to change without notice. Contact Dryvit to insure you have the most recent version.

APPROVED BY:	REV:	DATE:
AW	0	05.05.17





Outsulation Rail System

Typical Insulation Slab Layout

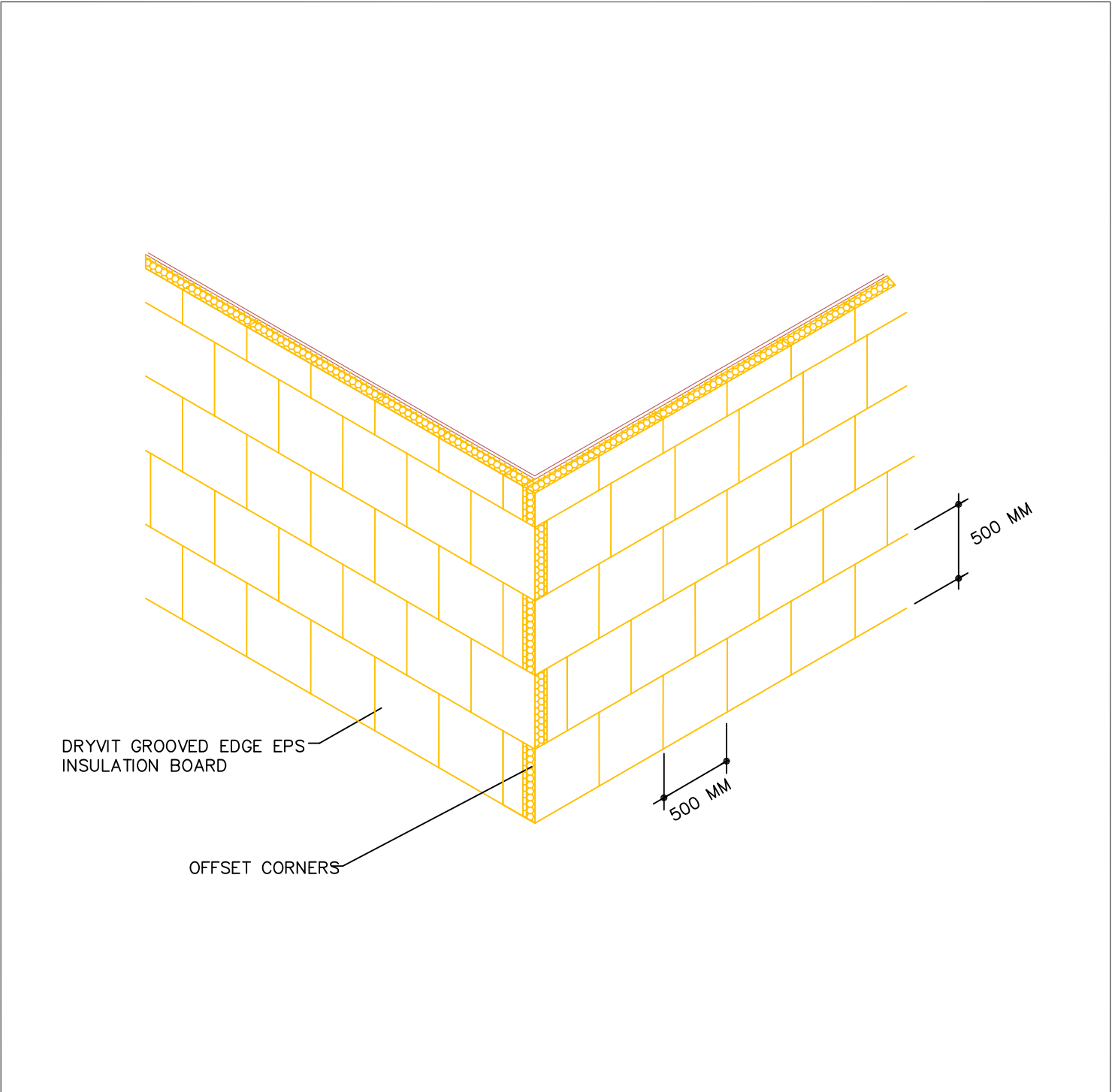
NOTE:

1.

The architecture, engineering and design of the project using the Dryvit products is the responsibility of the project's design professional. All systems must comply with local building codes and standards. This detail is for general information and guidance only and Dryvit specifically disclaims any liability for the use of this detail and for the architecture, design, engineering or workmanship of any project. The project design professional determines, in its sole discretion, whether this detail or a functionally equivalent alternative is best suited for the project. Use of a functionally equivalent detail does not violate Dryvit's warranty. This detail is subject to change without notice. Contact Dryvit to insure you have the most recent version.

APPROVED BY:	REV:	DATE:
AW	0	05.05.17





Outsulation Rail System

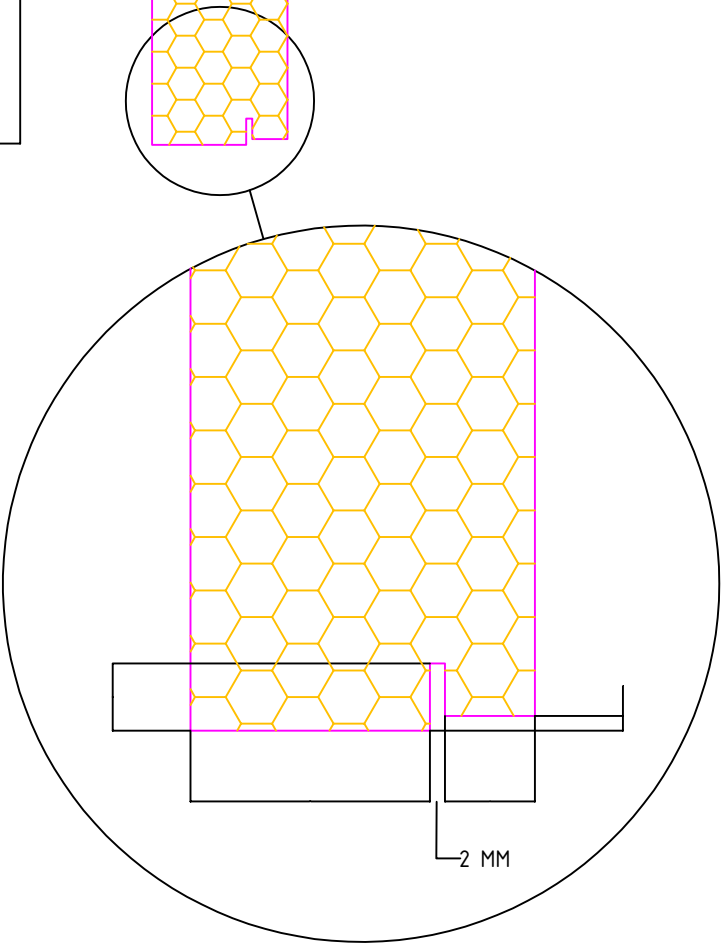
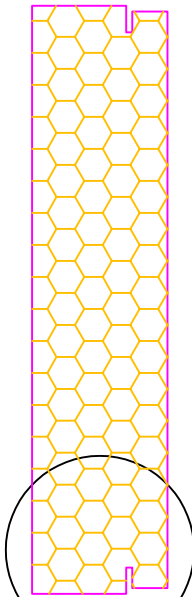
Typical Insulation Slab Layout at Corners

NOTE:
1.

The architecture, engineering and design of the project using the Dryvit products is the responsibility of the project's design professional. All systems must comply with local building codes and standards. This detail is for general information and guidance only and Dryvit specifically disclaims any liability for the use of this detail and for the architecture, design, engineering or workmanship of any project. The project design professional determines, in its sole discretion, whether this detail or a functionally equivalent alternative is best suited for the project. Use of a functionally equivalent detail does not violate Dryvit's warranty. This detail is subject to change without notice. Contact Dryvit to insure you have the most recent verSion.

APPROVED BY:	REV:	DATE:
AW	0	05.05.17





Outsulation Rail System

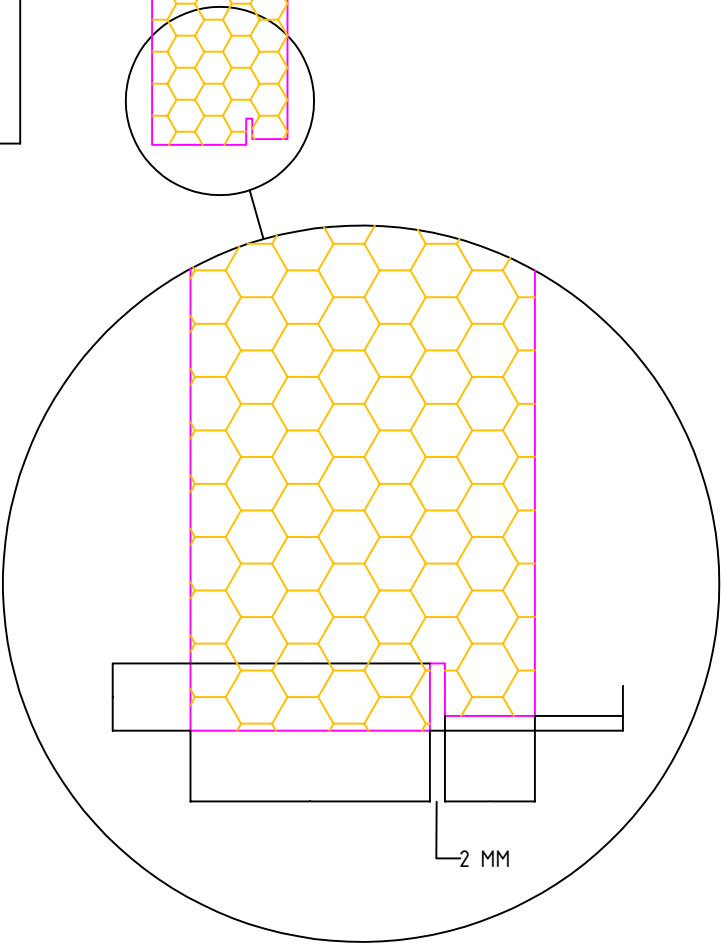
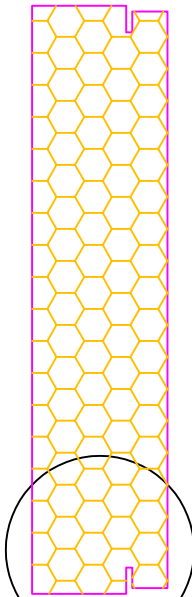
EPS Insulation Slab Profile

NOTE:
1.

The architecture, engineering and design of the project using the Dryvit products is the responsibility of the project's design professional. All systems must comply with local building codes and standards. This detail is for general information and guidance only and Dryvit specifically disclaims any liability for the use of this detail and for the architecture, design, engineering or workmanship of any project. The project design professional determines, in its sole discretion, whether this detail or a functionally equivalent alternative is best suited for the project. Use of a functionally equivalent detail does not violate Dryvit's warranty. This detail is subject to change without notice. Contact Dryvit to insure you have the most recent version.

APPROVED BY:	REV:	DATE:
AW	0	05.05.17





Outsulation Rail System

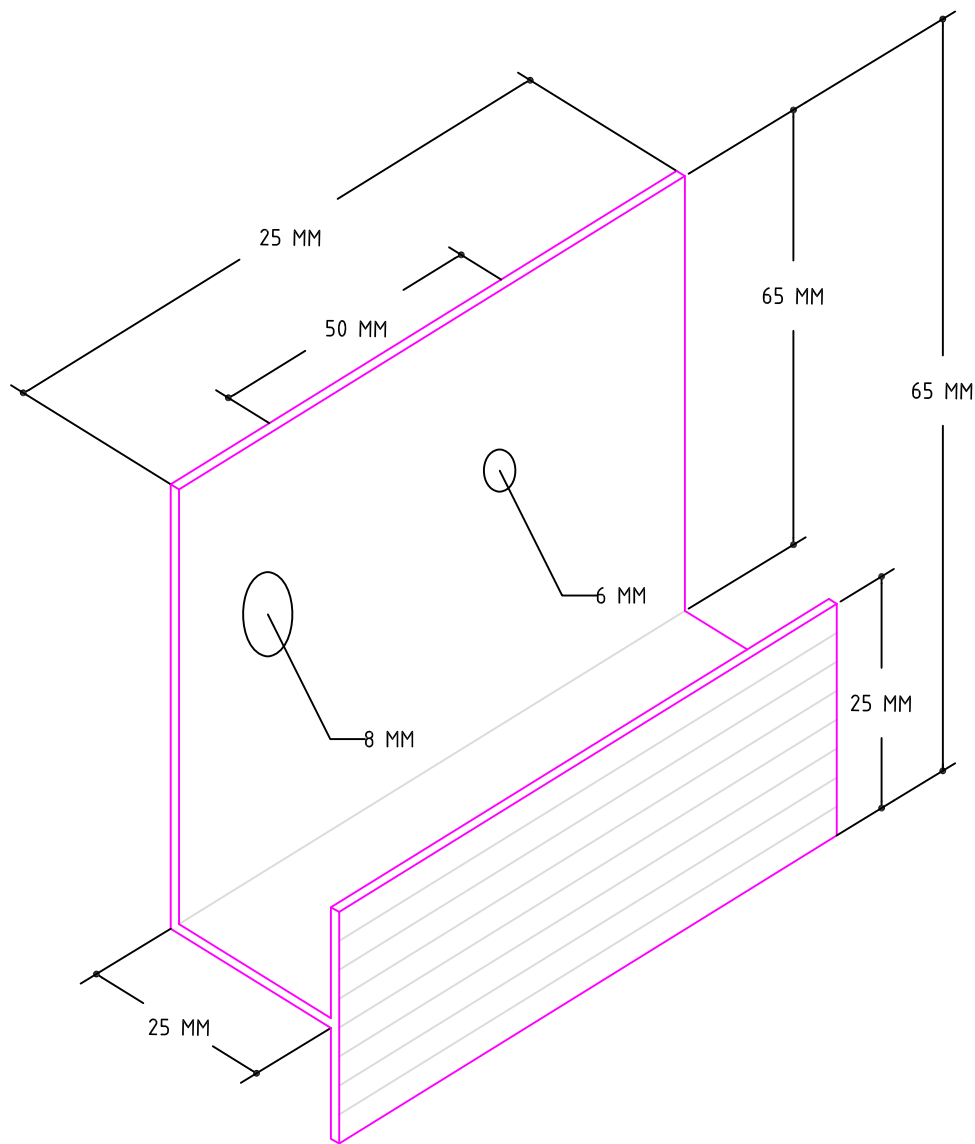
EPS Insulation Slab Profile

NOTE:
1.

The architecture, engineering and design of the project using the Dryvit products is the responsibility of the project's design professional. All systems must comply with local building codes and standards. This detail is for general information and guidance only and Dryvit specifically disclaims any liability for the use of this detail and for the architecture, design, engineering or workmanship of any project. The project design professional determines, in its sole discretion, whether this detail or a functionally equivalent alternative is best suited for the project. Use of a functionally equivalent detail does not violate Dryvit's warranty. This detail is subject to change without notice. Contact Dryvit to insure you have the most recent version.

APPROVED BY:	REV:	DATE:
AW	0	05.05.17





Outsulation Rail System

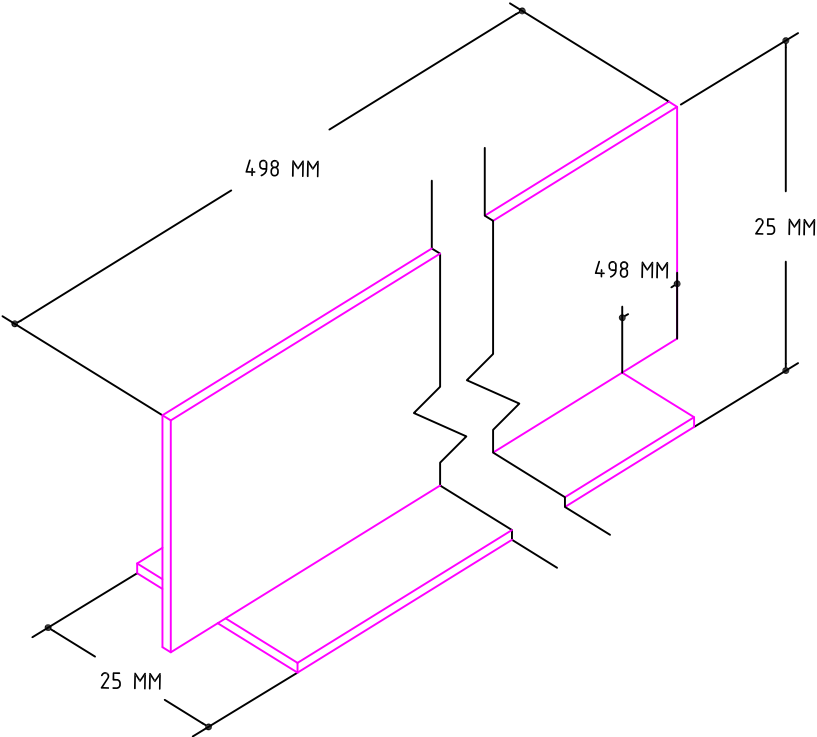
UPVC or Aluminium Holding Track

- NOTE:
- 1. TRACK SUPPLIED IN 2.5 M LENGTHS WITH ALTERNATING 6 MM AND 8 MM DIAMETER HOLES.

The architecture, engineering and design of the project using the Dryvit products is the responsibility of the project's design professional. All systems must comply with local building codes and standards. This detail is for general information and guidance only and Dryvit specifically disclaims any liability for the use of this detail and for the architecture, design, engineering or workmanship of any project. The project design professional determines, in its sole discretion, whether this detail or a functionally equivalent alternative is best suited for the project. Use of a functionally equivalent detail does not violate Dryvit's warranty. This detail is subject to change without notice. Contact Dryvit to insure you have the most recent version.

APPROVED BY:	REV:	DATE:
AW	0	05.05.17





Outsulation Rail System

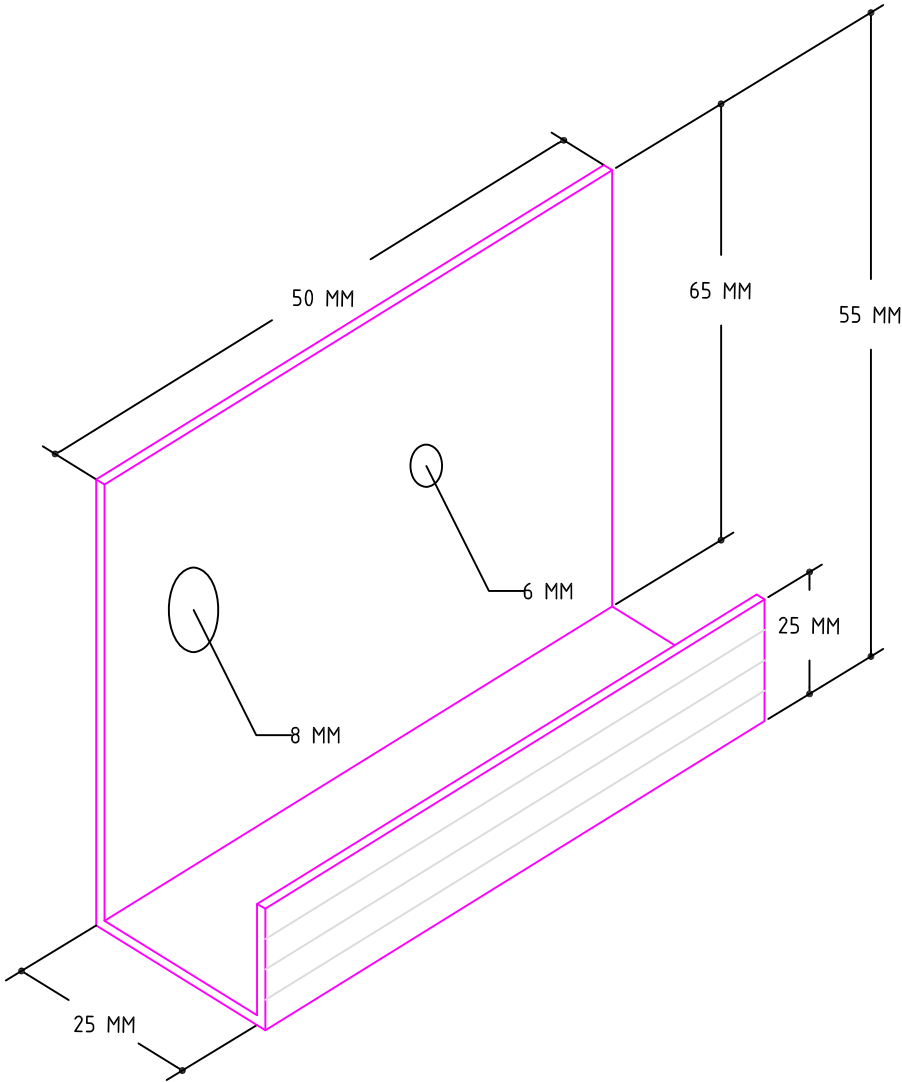
UPVC or Aluminium "T" Spline

NOTE:
1.

The architecture, engineering and design of the project using the Dryvit products is the responsibility of the project's design professional. All systems must comply with local building codes and standards. This detail is for general information and guidance only and Dryvit specifically disclaims any liability for the use of this detail and for the architecture, design, engineering or workmanship of any project. The project design professional determines, in its sole discretion, whether this detail or a functionally equivalent alternative is best suited for the project. Use of a functionally equivalent detail does not violate Dryvit's warranty. This detail is subject to change without notice. Contact Dryvit to insure you have the most recent version.

APPROVED BY:	REV:	DATE:
AW	0	05.05.17





Outsulation Rail System

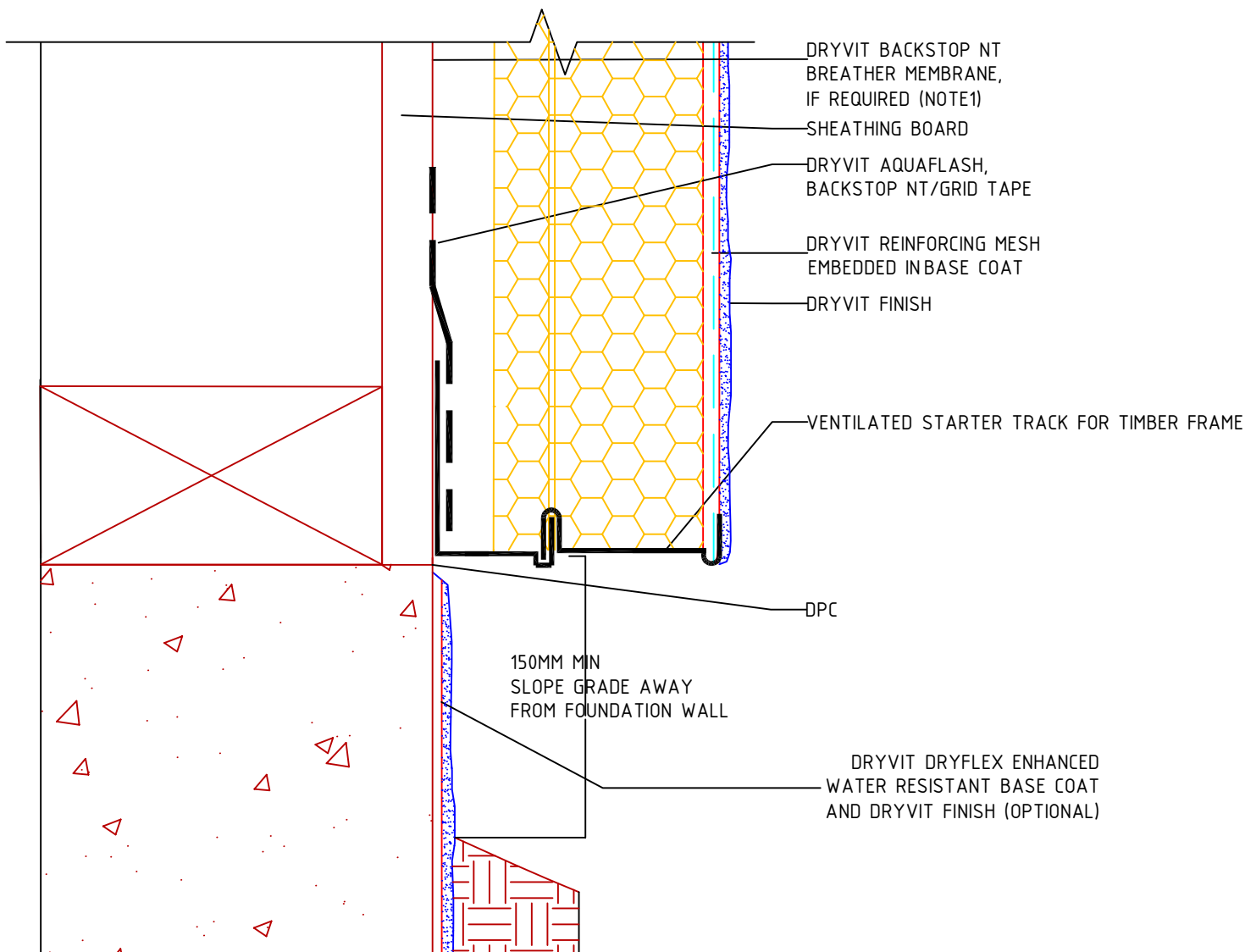
UPVC or Aluminium Termination Track

- NOTE:
- 1. TRACK SUPPLIED IN 2.5 M LENGTHS WITH ALTERNATING 6 MM AND 8 MM DIAMETER HOLES.

The architecture, engineering and design of the project using the Dryvit products is the responsibility of the project's design professional. All systems must comply with local building codes and standards. This detail is for general information and guidance only and Dryvit specifically disclaims any liability for the use of this detail and for the architecture, design, engineering or workmanship of any project. The project design professional determines, in its sole discretion, whether this detail or a functionally equivalent alternative is best suited for the project. Use of a functionally equivalent detail does not violate Dryvit's warranty. This detail is subject to change without notice. Contact Dryvit to insure you have the most recent version.

APPROVED BY:	REV:	DATE:
AW	0	05.05.17





Outsulation Rail System

Termination Above Grade Using Aluminium Starter Track

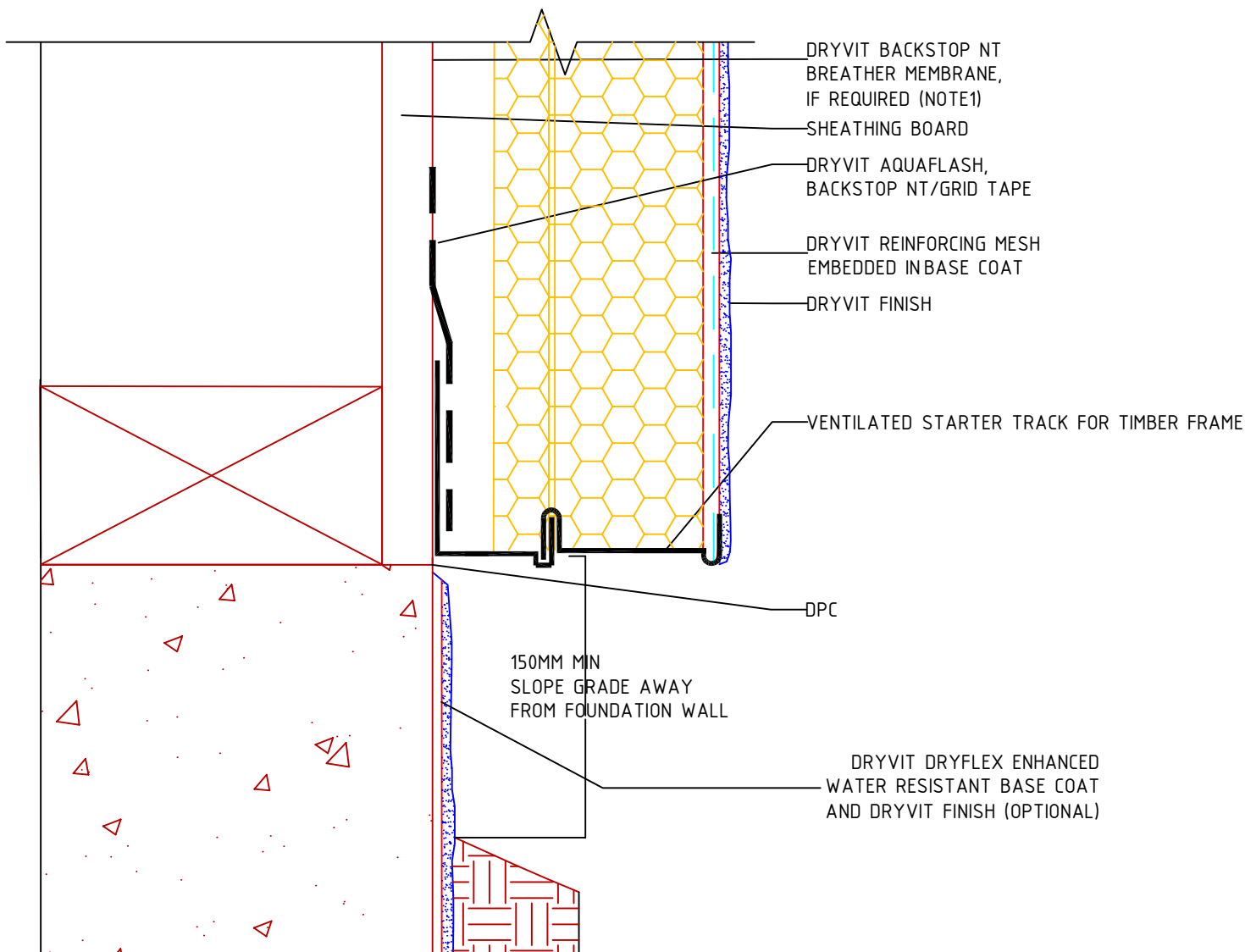
NOTES:

- 1. AS AN ALTERNATIVE TO BACKSTOP NT A SHEET TYPE BREATHER MEMBRANES MAY BE USED AND SHALL BE INSTALLED IN A WEATHER BOARD FASHION IN ACCORDANCE WITH CODE AND MANUFACTURER'S REQUIREMENTS
- 2. UNI TRACK USED AT AREAS OTHER THAN AT GRADE WILL REQUIRE THE INSULATION BOARD EDGE BE FULLY WRAPPED WITH BASE COAT AND REINFORCING MESH

The architecture, engineering and design of the project using the Dryvit products is the responsibility of the project's design professional. All systems must comply with local building codes and standards. This detail is for general information and guidance only and Dryvit specifically disclaims any liability for the use of this detail and for the architecture, design, engineering or workmanship of any project. The project design professional determines, in its sole discretion, whether this detail or a functionally equivalent alternative is best suited for the project. Use of a functionally equivalent detail does not violate Dryvit's warranty. This detail is subject to change without notice. Contact Dryvit to insure you have the most recent version.



APPROVED BY:	REV:	DATE:
AW	0	05.05.17



Outsulation Rail System

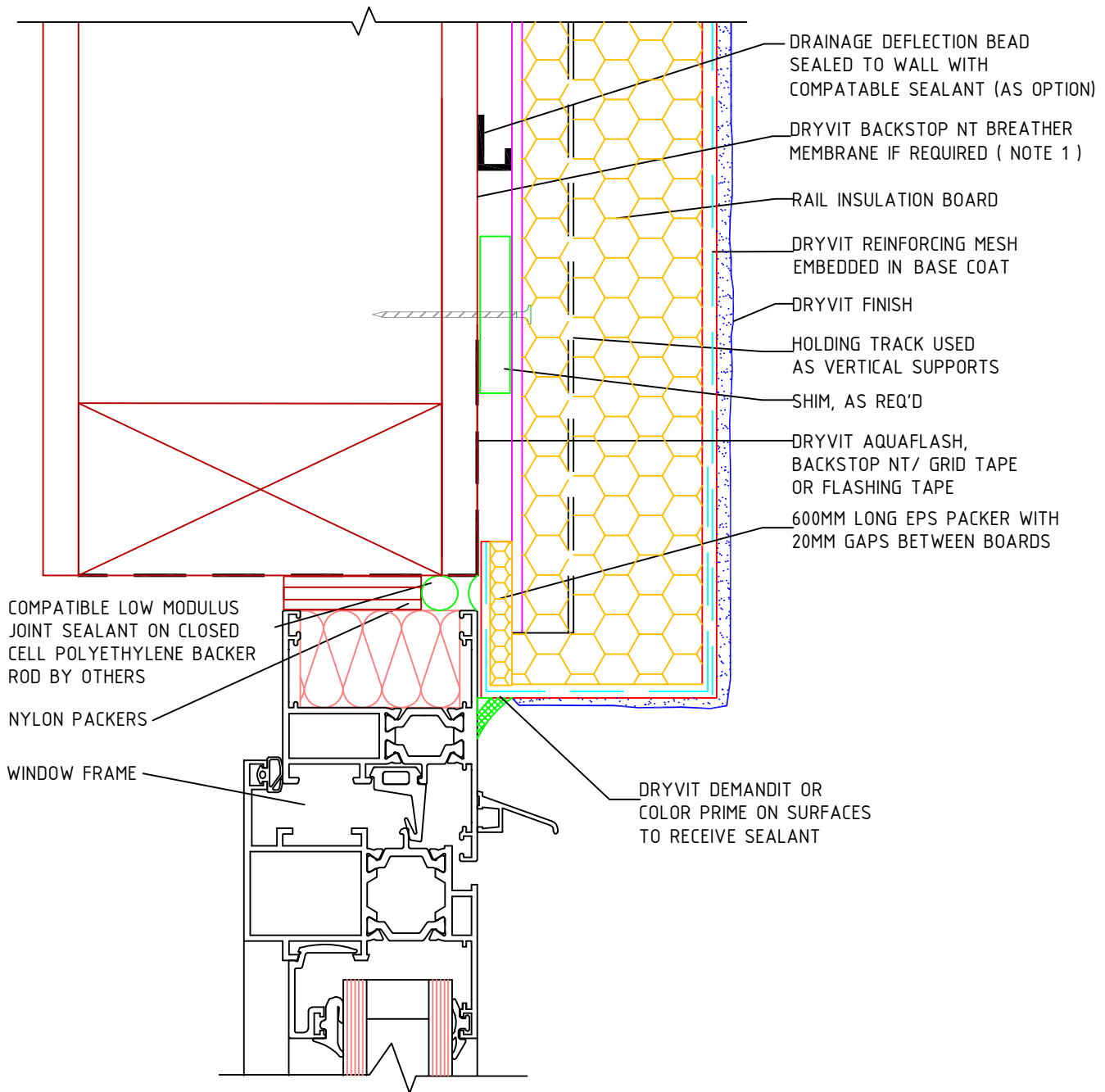
Termination Above Grade
Using Aluminium Starter Track

- NOTES:
- 1. AS AN ALTERNATIVE TO BACKSTOP NT A SHEET TYPE BREATHER MEMBRANES MAY BE USED AND SHALL BE INSTALLED IN A WEATHER BOARD FASHION IN ACCORDANCE WITH CODE AND MANUFACTURER'S REQUIREMENTS
 - 2. UNI TRACK USED AT AREAS OTHER THAN AT GRADE WILL REQUIRE THE INSULATION BOARD EDGE BE FULLY WRAPPED WITH BASE COAT AND REINFORCING MESH

The architecture, engineering and design of the project using the Dryvit products is the responsibility of the project's design professional. All systems must comply with local building codes and standards. This detail is for general information and guidance only and Dryvit specifically disclaims any liability for the use of this detail and for the architecture, design, engineering or workmanship of any project. The project design professional determines, in its sole discretion, whether this detail or a functionally equivalent alternative is best suited for the project. Use of a functionally equivalent detail does not violate Dryvit's warranty. This detail is subject to change without notice. Contact Dryvit to insure you have the most recent version.



APPROVED BY:	REV:	DATE:
AW	0	05.05.17



Outsulation Rail System

Set Back Window Head-Framed Substrate

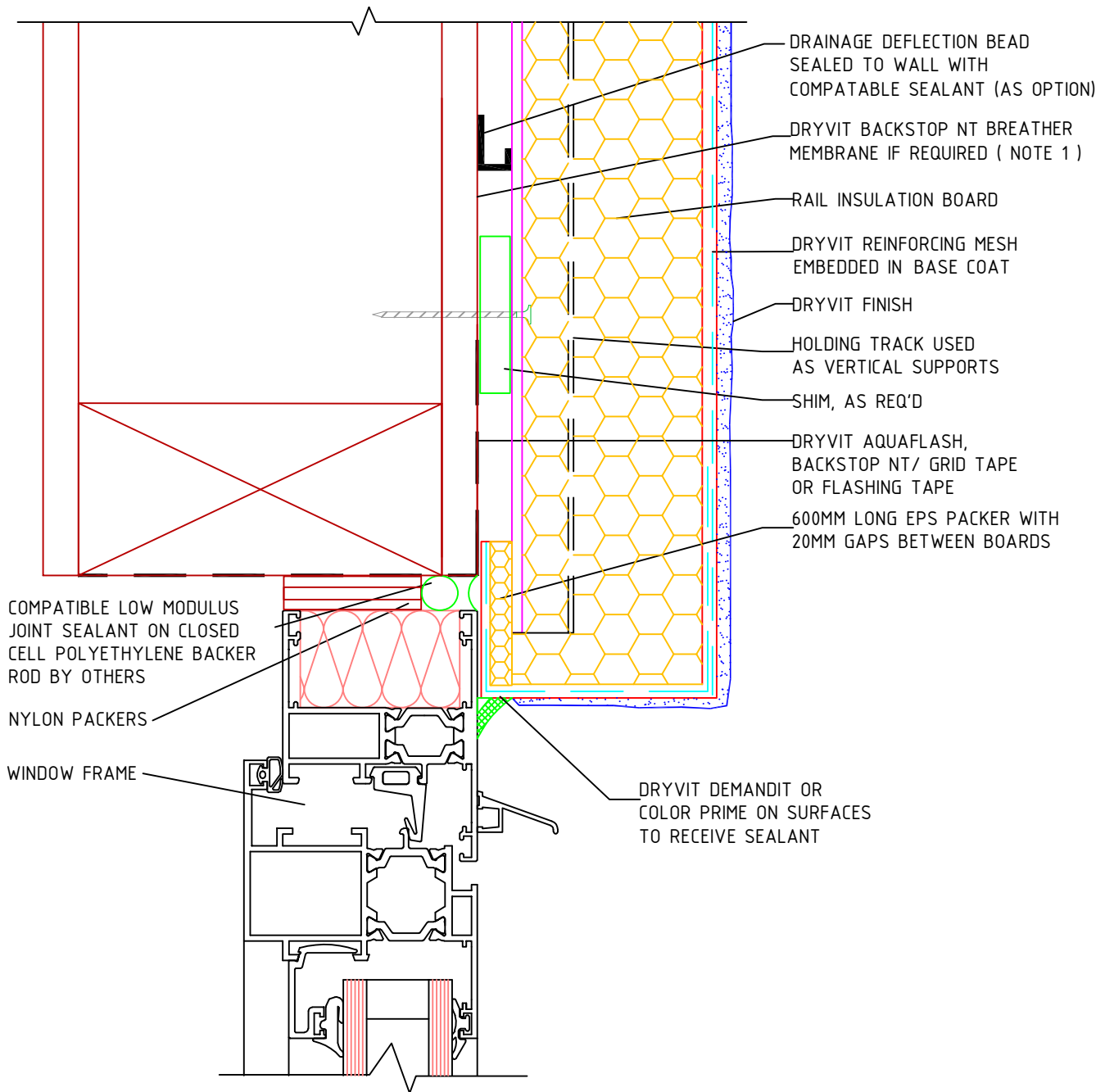
NOTES:

1. AS AN ALTERNATIVE TO BACKSTOP NT A SHEET TYPE BREATHER MEMBRANES MAY BE USED AND SHALL BE INSTALLED IN A WEATHER BOARD FASHION IN ACCORDANCE WITH CODE AND MANUFACTURER'S REQUIREMENTS

The architecture, engineering and design of the project using the Dryvit products is the responsibility of the project's design professional. All systems must comply with local building codes and standards. This detail is for general information and guidance only and Dryvit specifically disclaims any liability for the use of this detail and for the architecture, design, engineering or workmanship of any project. The project design professional determines, in its sole discretion, whether this detail or a functionally equivalent alternative is best suited for the project. Use of a functionally equivalent detail does not violate Dryvit's warranty. This detail is subject to change without notice. Contact Dryvit to insure you have the most recent version.



APPROVED BY:	REV:	DATE:
AW	0	05.05.17



Outsulation Rail System

Set Back Window Head-Framed Substrate

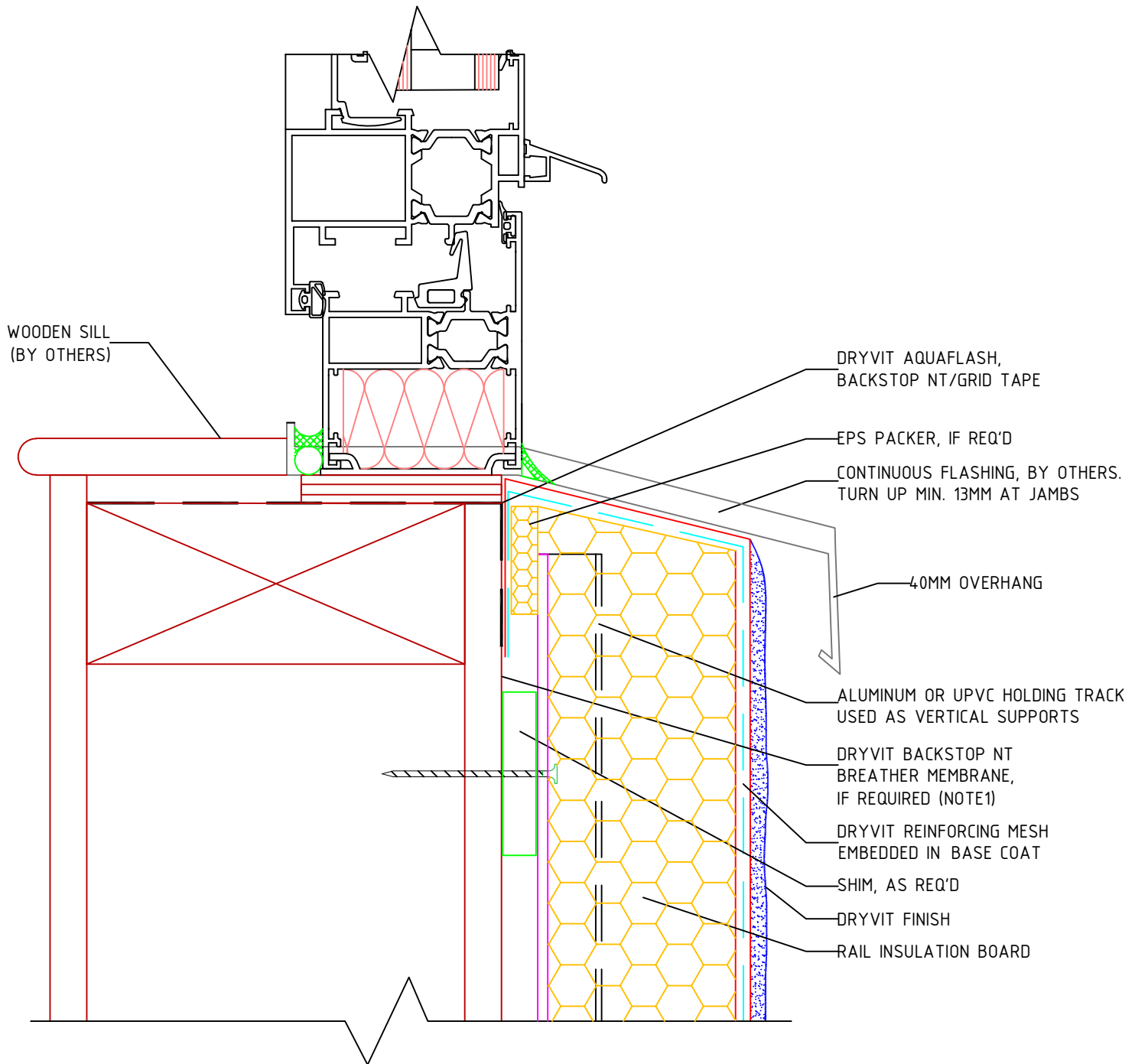
NOTES:

1. AS AN ALTERNATIVE TO BACKSTOP NT A SHEET TYPE BREATHER MEMBRANES MAY BE USED AND SHALL BE INSTALLED IN A WEATHER BOARD FASHION IN ACCORDANCE WITH CODE AND MANUFACTURER'S REQUIREMENTS

The architecture, engineering and design of the project using the Dryvit products is the responsibility of the project's design professional. All systems must comply with local building codes and standards. This detail is for general information and guidance only and Dryvit specifically disclaims any liability for the use of this detail and for the architecture, design, engineering or workmanship of any project. The project design professional determines, in its sole discretion, whether this detail or a functionally equivalent alternative is best suited for the project. Use of a functionally equivalent detail does not violate Dryvit's warranty. This detail is subject to change without notice. Contact Dryvit to insure you have the most recent version.



APPROVED BY:	REV:	DATE:
AW	0	05.05.17



Outsulation Rail System

Set Back Window Sill-Framed Substrate

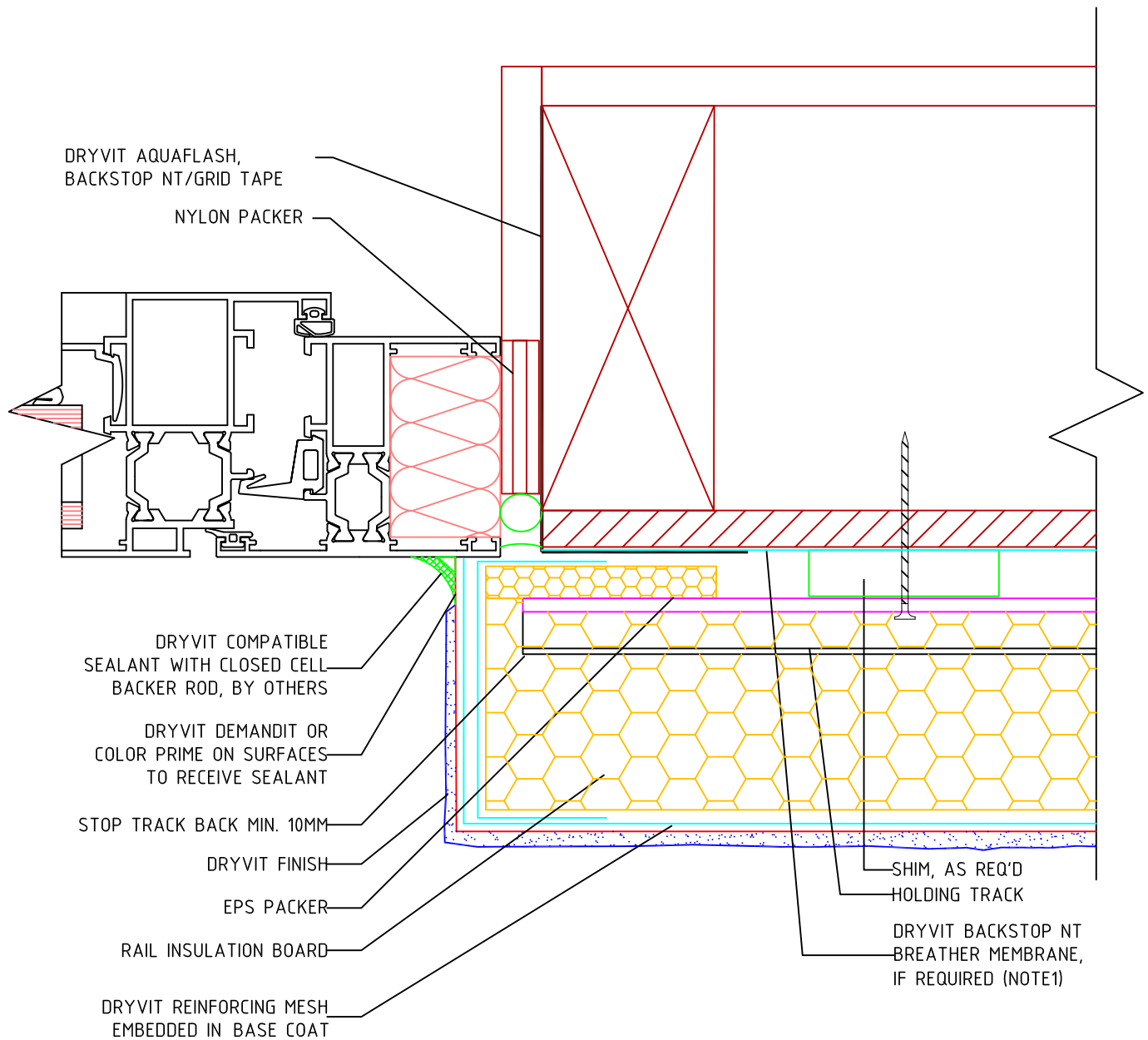
NOTES:

1. AS AN ALTERNATIVE TO BACKSTOP NT A SHEET TYPE BREATHER MEMBRANES MAY BE USED AND SHALL BE INSTALLED IN A WEATHER BOARD FASHION IN ACCORDANCE WITH CODE AND MANUFACTURER'S REQUIREMENTS

The architecture, engineering and design of the project using the Dryvit products is the responsibility of the project's design professional. All systems must comply with local building codes and standards. This detail is for general information and guidance only and Dryvit specifically disclaims any liability for the use of this detail and for the architecture, design, engineering or workmanship of any project. The project design professional determines, in its sole discretion, whether this detail or a functionally equivalent alternative is best suited for the project. Use of a functionally equivalent detail does not violate Dryvit's warranty. This detail is subject to change without notice. Contact Dryvit to insure you have the most recent version.



APPROVED BY:	REV:	DATE:
AW	0	05.05.17



Outsulation Rail System

Set-Back Window Jamb- Framed Substrate

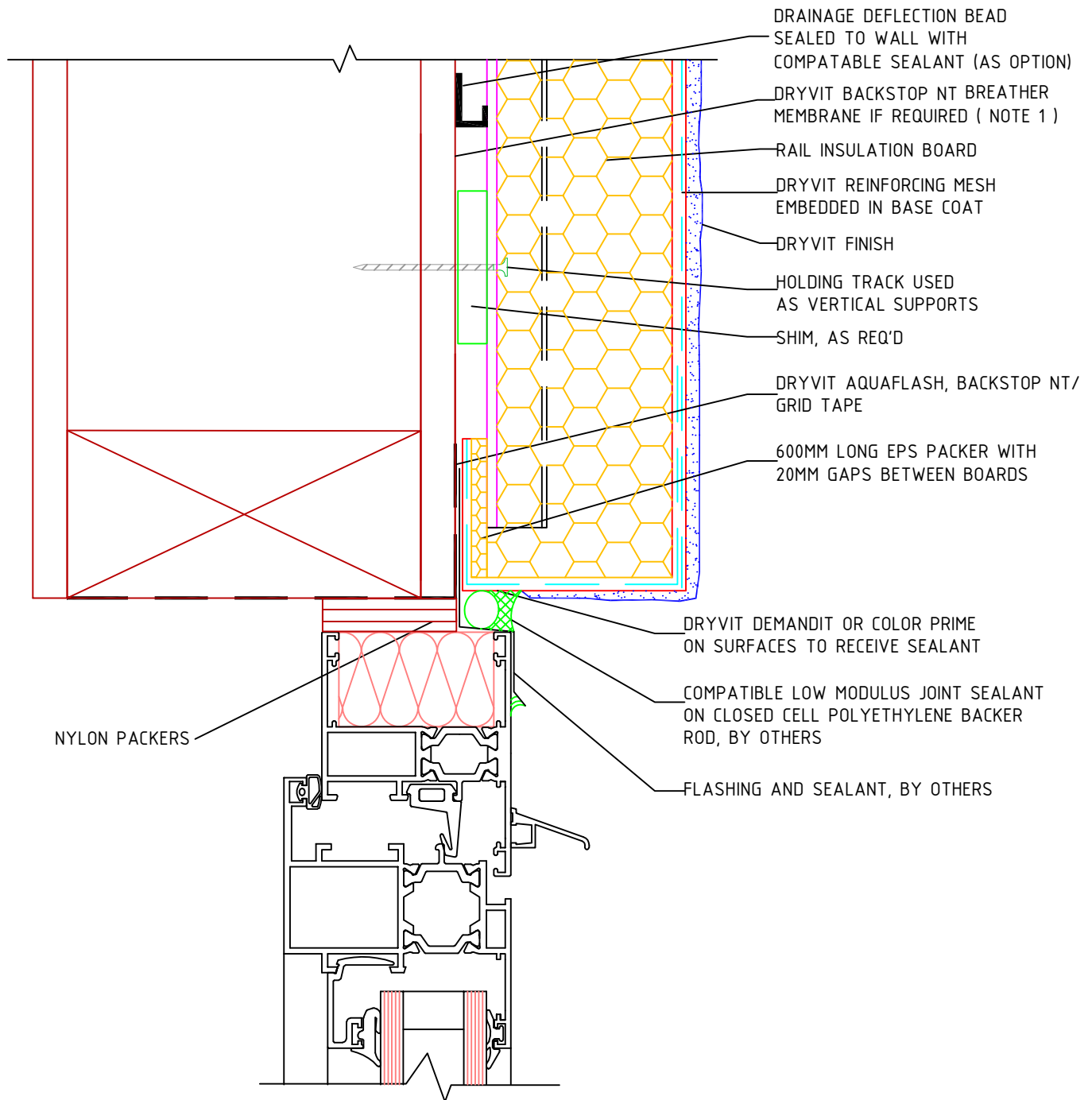
NOTES:

1. AS AN ALTERNATIVE TO BACKSTOP NT A SHEET TYPE BREATHER MEMBRANES MAY BE USED AND SHALL BE INSTALLED IN A WEATHER BOARD FASHION IN ACCORDANCE WITH CODE AND MANUFACTURER'S REQUIREMENTS

The architecture, engineering and design of the project using the Dryvit products is the responsibility of the project's design professional. All systems must comply with local building codes and standards. This detail is for general information and guidance only and Dryvit specifically disclaims any liability for the use of this detail and for the architecture, design, engineering or workmanship of any project. The project design professional determines, in its sole discretion, whether this detail or a functionally equivalent alternative is best suited for the project. Use of a functionally equivalent detail does not violate Dryvit's warranty. This detail is subject to change without notice. Contact Dryvit to insure you have the most recent version.

APPROVED BY:	REV:	DATE:
AW	0	05.05.17





Outsulation Rail System

Set Forward Window Head-Framed Substrate

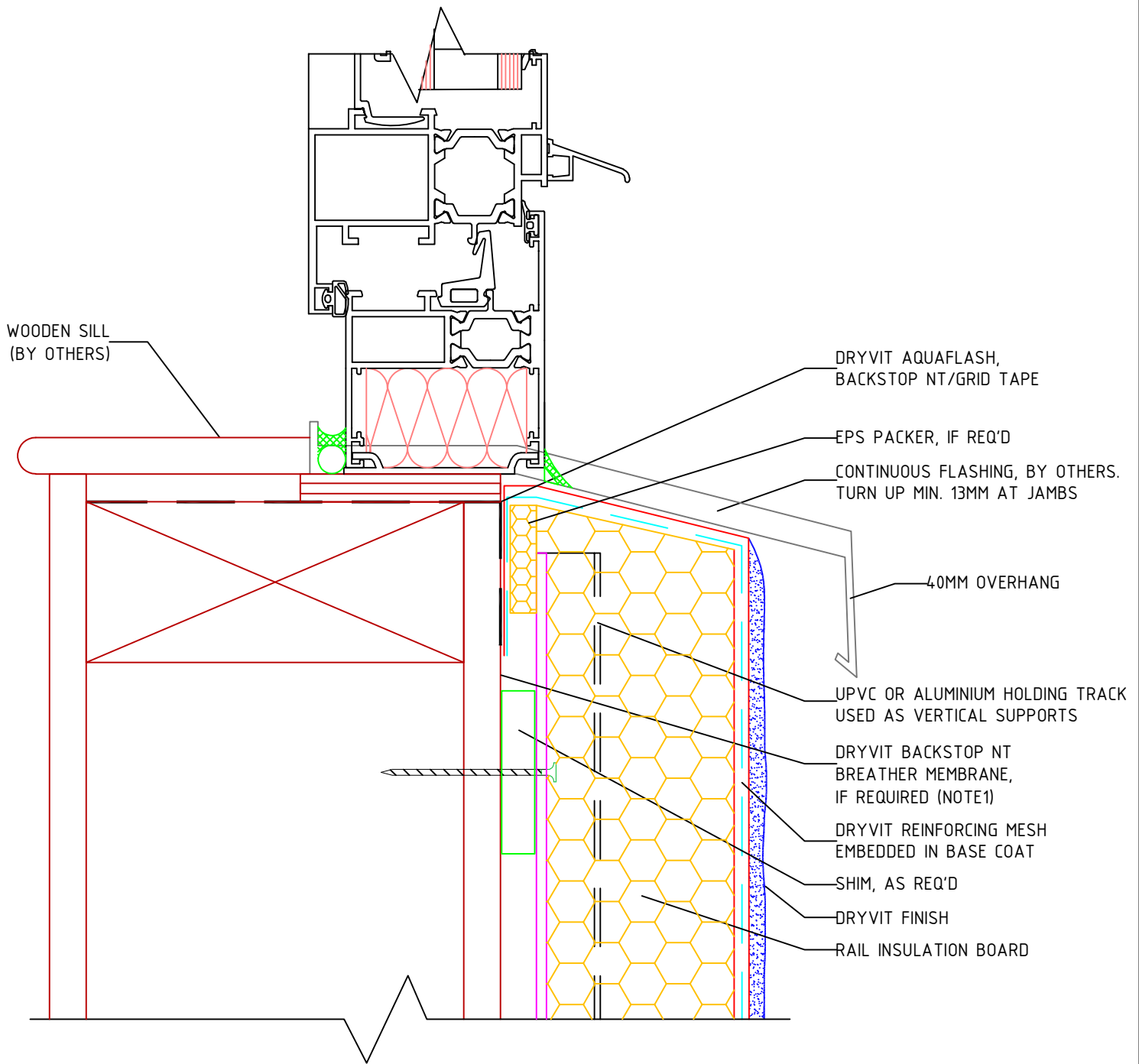
NOTES:

1. AS AN ALTERNATIVE TO BACKSTOP NT A SHEET TYPE BREATHER MEMBRANES MAY BE USED AND SHALL BE INSTALLED IN A WEATHER BOARD FASHION IN ACCORDANCE WITH CODE AND MANUFACTURER'S REQUIREMENTS

The architecture, engineering and design of the project using the Dryvit products is the responsibility of the project's design professional. All systems must comply with local building codes and standards. This detail is for general information and guidance only and Dryvit specifically disclaims any liability for the use of this detail and for the architecture, design, engineering or workmanship of any project. The project design professional determines, in its sole discretion, whether this detail or a functionally equivalent alternative is best suited for the project. Use of a functionally equivalent detail does not violate Dryvit's warranty. This detail is subject to change without notice. Contact Dryvit to insure you have the most recent version.



APPROVED BY:	REV:	DATE:
AW	0	05.05.17



Outsulation Rail System

Set Forward Window Sill-Framed Substrate

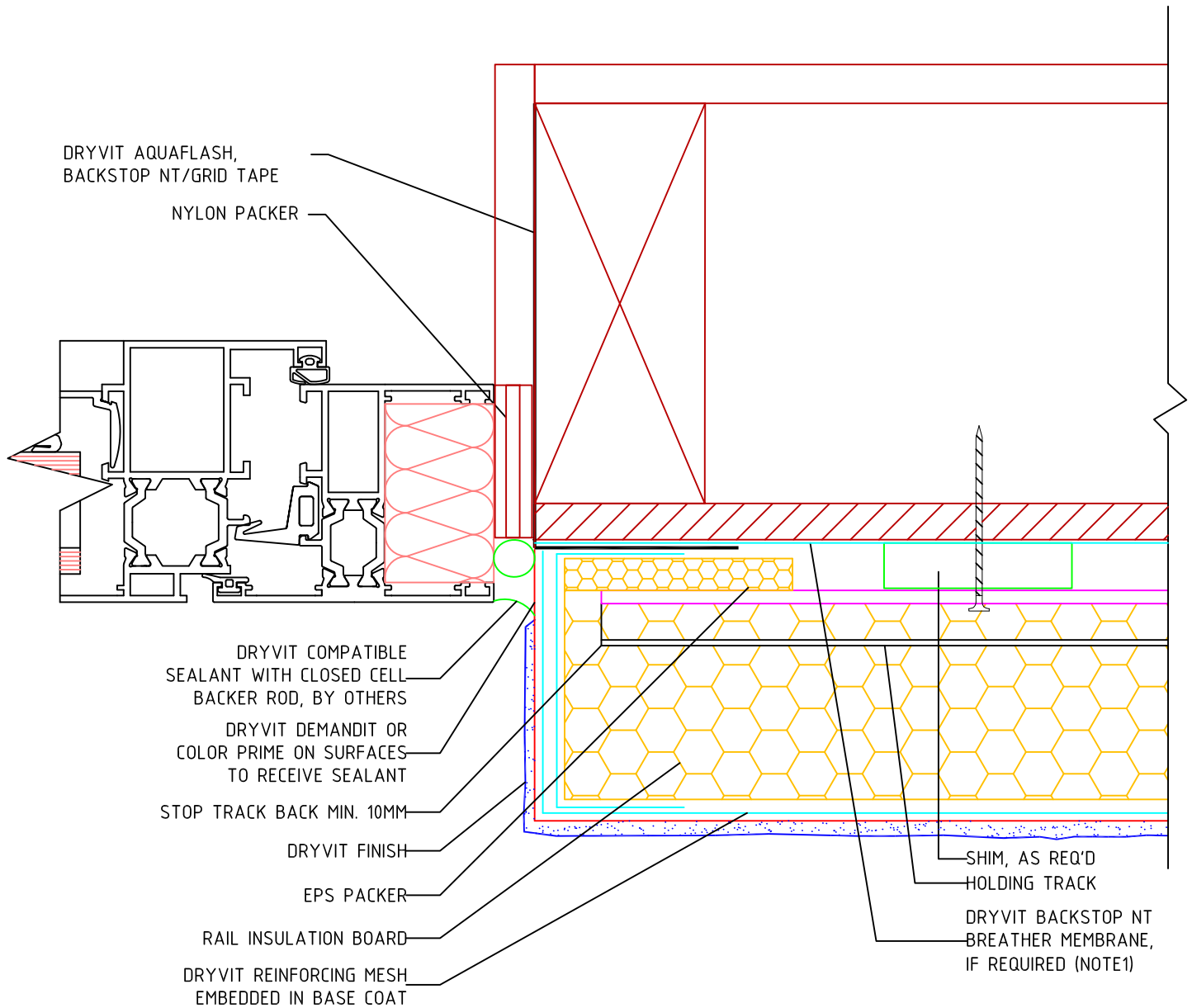
NOTES:

1. AS AN ALTERNATIVE TO BACKSTOP NT A SHEET TYPE BREATHER MEMBRANES MAY BE USED AND SHALL BE INSTALLED IN A WEATHER BOARD FASHION IN ACCORDANCE WITH CODE AND MANUFACTURER'S REQUIREMENTS

The architecture, engineering and design of the project using the Dryvit products is the responsibility of the project's design professional. All systems must comply with local building codes and standards. This detail is for general information and guidance only and Dryvit specifically disclaims any liability for the use of this detail and for the architecture, design, engineering or workmanship of any project. The project design professional determines, in its sole discretion, whether this detail or a functionally equivalent alternative is best suited for the project. Use of a functionally equivalent detail does not violate Dryvit's warranty. This detail is subject to change without notice. Contact Dryvit to insure you have the most recent version.



APPROVED BY:	REV:	DATE:
AW	0	05.05.17



Outsulation Rail System

Set Forward Window Jamb- Framed Substrate

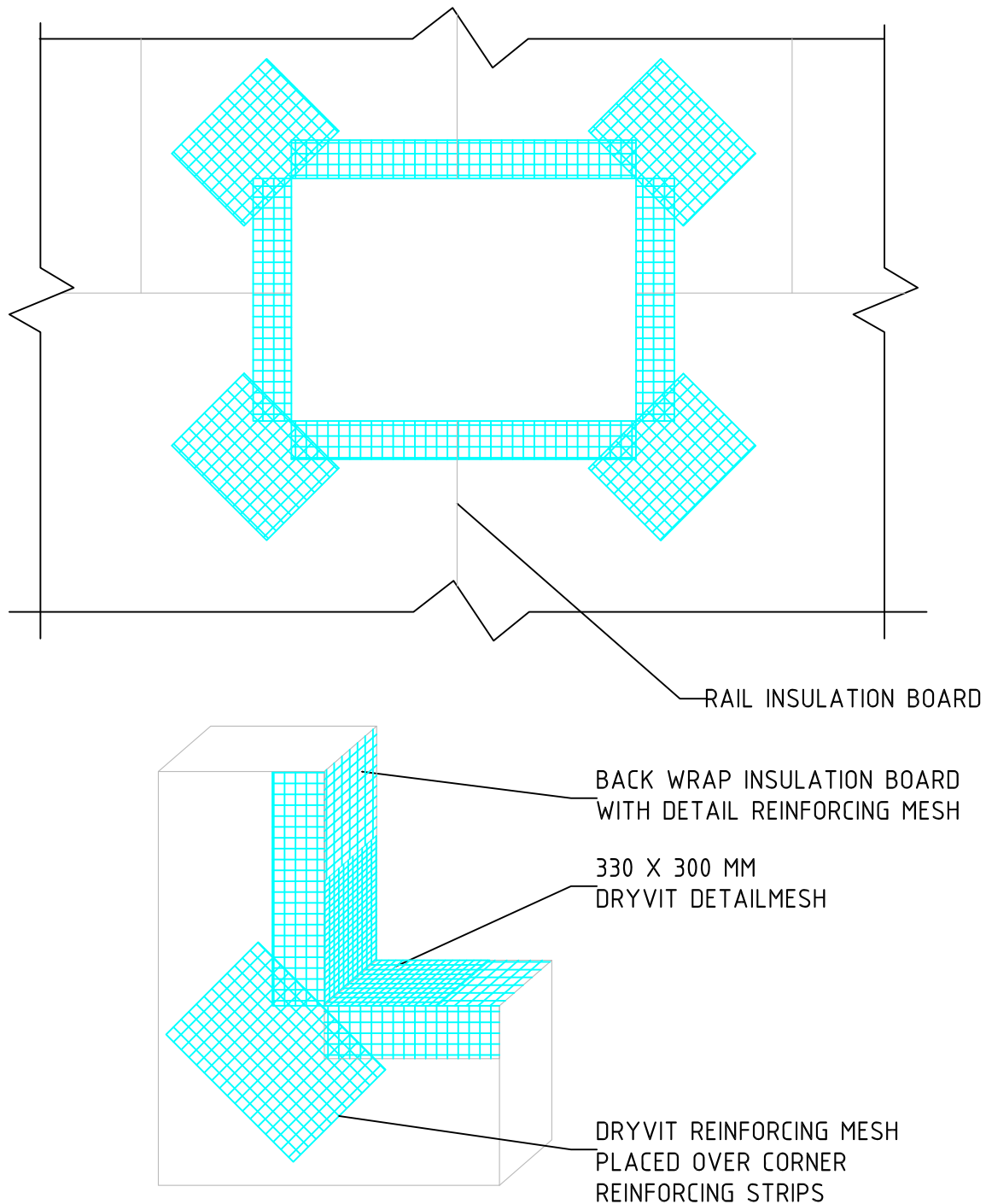
NOTES:

1. AS AN ALTERNATIVE TO BACKSTOP NT A SHEET TYPE BREATHER MEMBRANES MAY BE USED AND SHALL BE INSTALLED IN A WEATHER BOARD FASHION IN ACCORDANCE WITH CODE AND MANUFACTURER'S REQUIREMENTS

The architecture, engineering and design of the project using the Dryvit products is the responsibility of the project's design professional. All systems must comply with local building codes and standards. This detail is for general information and guidance only and Dryvit specifically disclaims any liability for the use of this detail and for the architecture, design, engineering or workmanship of any project. The project design professional determines, in its sole discretion, whether this detail or a functionally equivalent alternative is best suited for the project. Use of a functionally equivalent detail does not violate Dryvit's warranty. This detail is subject to change without notice. Contact Dryvit to insure you have the most recent version.

APPROVED BY:	REV:	DATE:
AW	0	05.05.17





Outsulation Rail System

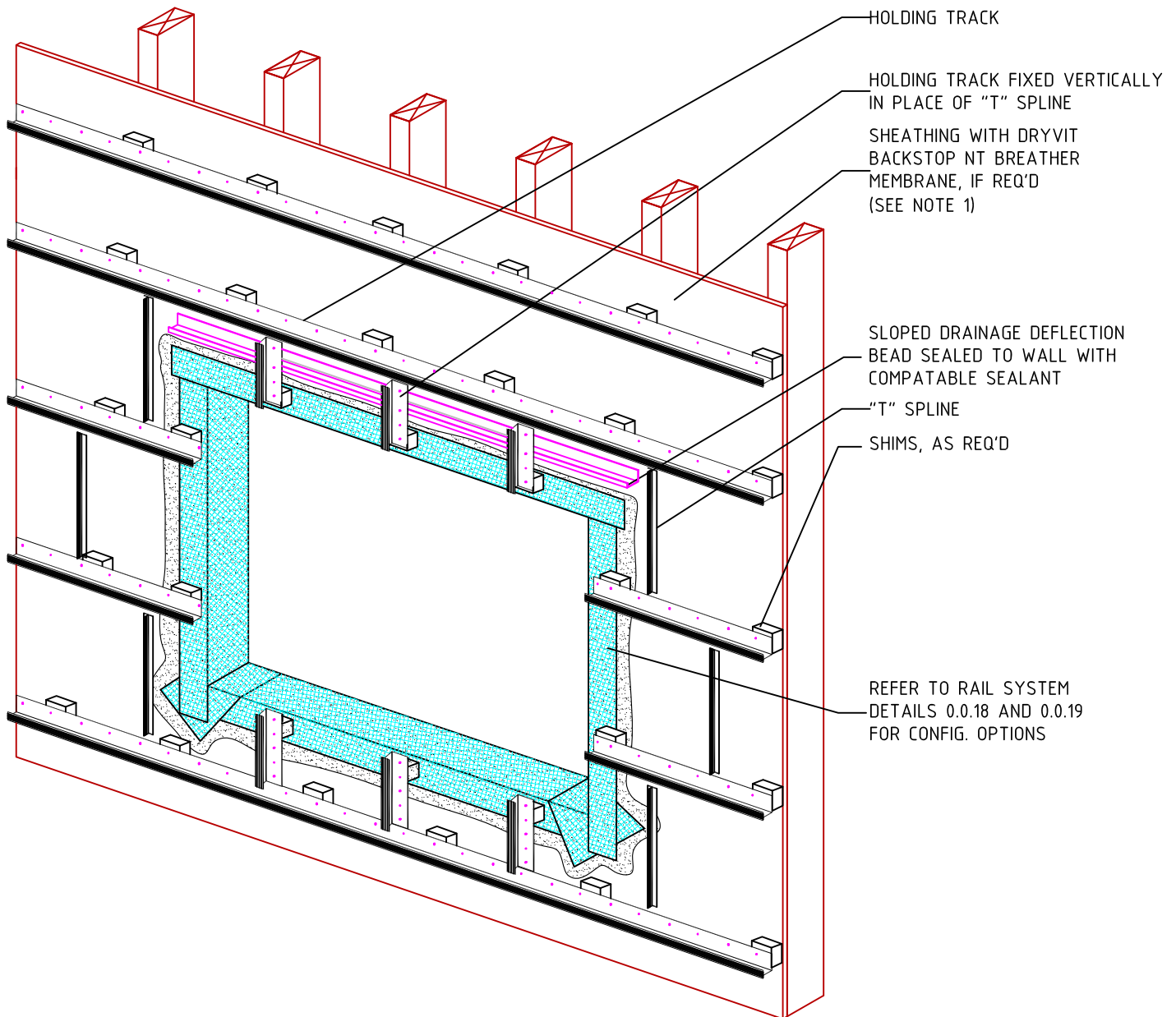
System Configuration At Openings

NOTES:

1. LOCATE INSULATION BOARDS SUCH THAT BOARD EDGES DO NOT ALIGN WITH CORNERS OF PENETRATION.
2. APPLY A PIECE OF 330 MM X 300 MM DETAIL REINFORCING MESH DIAGONALLY AT EACH CORNER.

The architecture, engineering and design of the project using the Dryvit products is the responsibility of the project's design professional. All systems must comply with local building codes and standards. This detail is for general information and guidance only and Dryvit specifically disclaims any liability for the use of this detail and for the architecture, design, engineering or workmanship of any project. The project design professional determines, in its sole discretion, whether this detail or a functionally equivalent alternative is best suited for the project. Use of a functionally equivalent detail does not violate Dryvit's warranty. This detail is subject to change without notice. Contact Dryvit to insure you have the most recent version.

APPROVED BY:	REV:	DATE:
AW	0	05.05.17



Outsulation Rail System

Track Layout At Openings

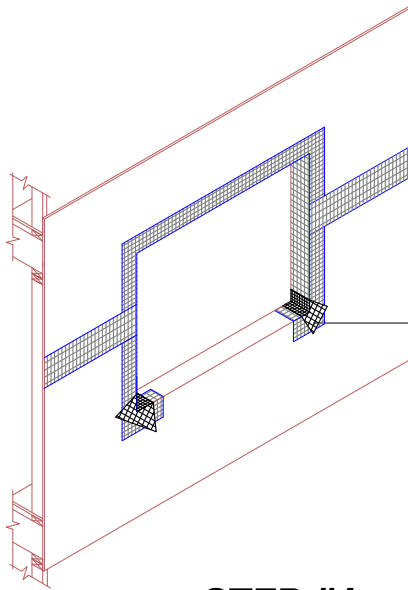
NOTES:

1. AS AN ALTERNATIVE TO BACKSTOP NT A SHEET TYPE BREATHER MEMBRANES MAY BE USED AND SHALL BE INSTALLED IN A WEATHER BOARD FASHION IN ACCORDANCE WITH CODE AND MANUFACTURER'S REQUIREMENTS

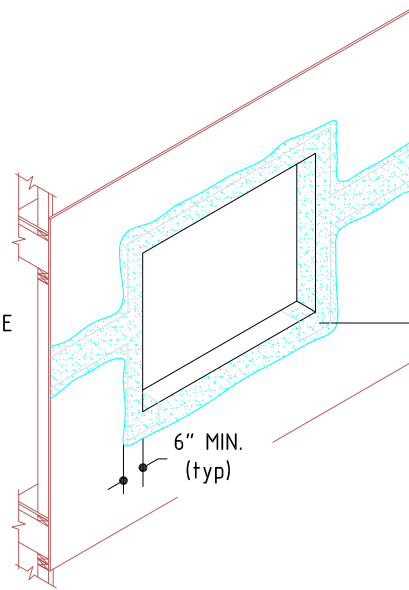
The architecture, engineering and design of the project using the Dryvit products is the responsibility of the project's design professional. All systems must comply with local building codes and standards. This detail is for general information and guidance only and Dryvit specifically disclaims any liability for the use of this detail and for the architecture, design, engineering or workmanship of any project. The project design professional determines, in its sole discretion, whether this detail or a functionally equivalent alternative is best suited for the project. Use of a functionally equivalent detail does not violate Dryvit's warranty. This detail is subject to change without notice. Contact Dryvit to insure you have the most recent version.

APPROVED BY:	REV:	DATE:
AW	0	05.05.17

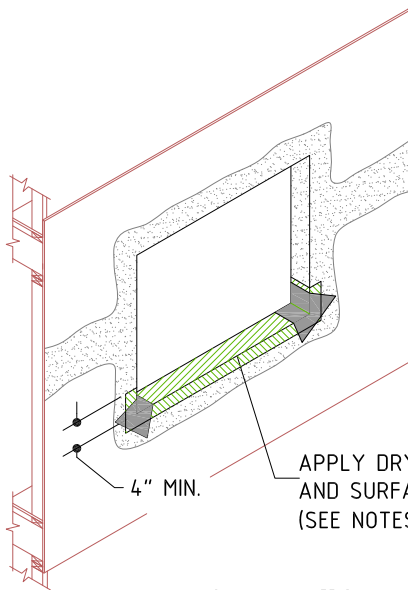




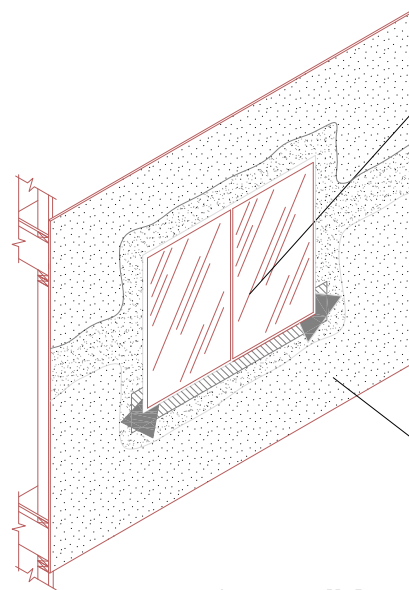
APPLY DRYVIT GRID TAPE
(SEE NOTES 1 AND 2)

STEP #1

TROWEL APPLY DRYVIT
BACKSTOP NT-TEXTURE
(SEE NOTE 2)

STEP #2

APPLY DRYVIT FLASHING TAPE
AND SURFACE CONDITIONER
(SEE NOTES 2 AND 3)

STEP #3

INSTALL WINDOW UNIT AND
ASSOCIATED FLASHINGS
(SEE NOTE #4)

DRYVIT BACKSTOP NT-
SMOOTH OR TEXTURE,
IF REQ'D (SEE NOTE #5)

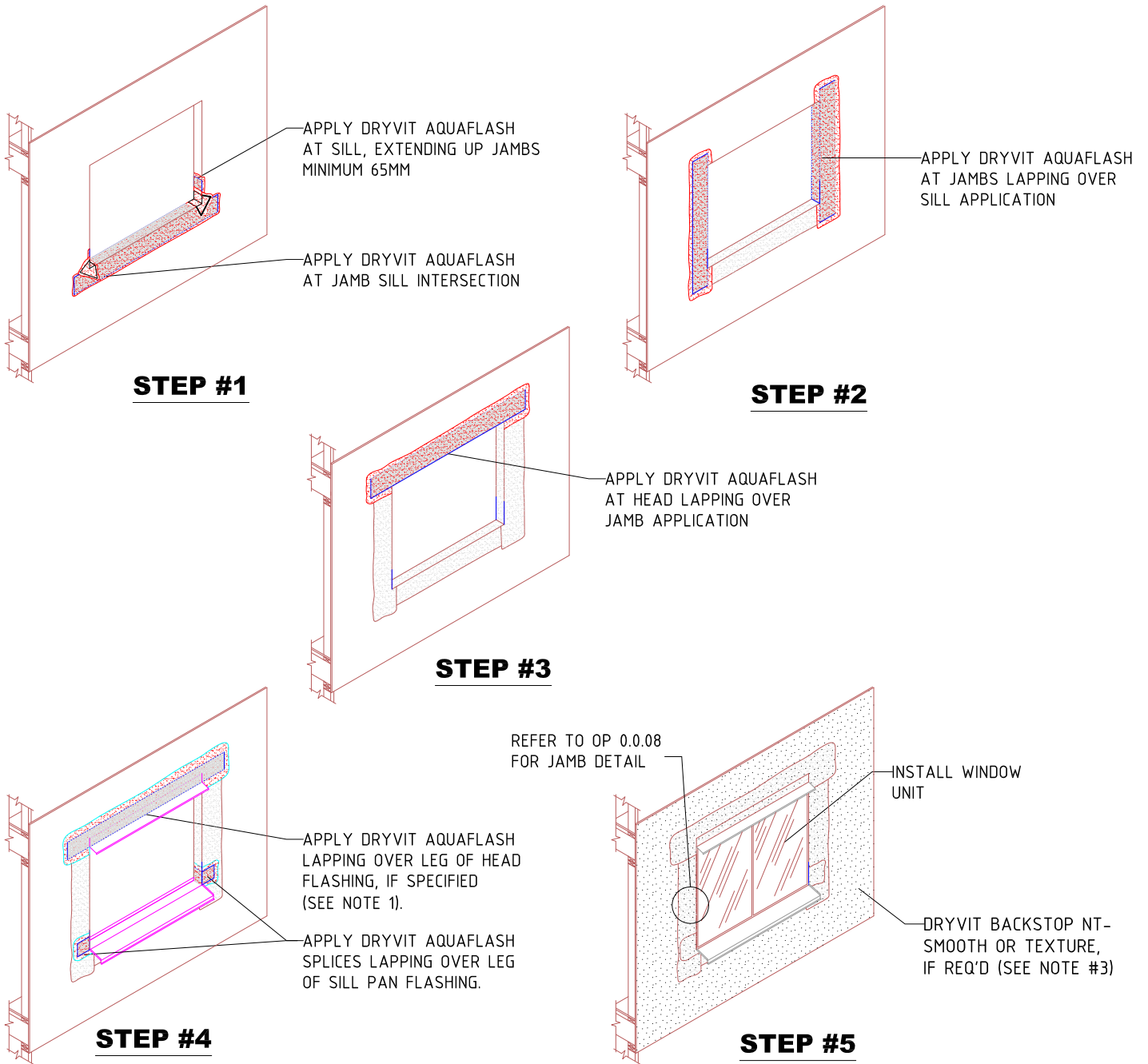
STEP #4**Outsulation Rail System****Opening Prep- Backstop NT/ Grid Tape Option****NOTE:**

1. APPLY DRYVIT GRID TAPE ON CORNERS OF OPENING AND SHEATHING JOINTS.
2. TROWEL APPLY DRYVIT BACKSTOP NT-TEXTURE OVER THE DRYVIT GRID TAPE ALL THE WAY TO INSIDE FACE OF OPENING. ALL VOIDS MUST BE FILLED; MULTIPLE PASSES MAY BE REQUIRED. AS AN OPTION, DRYVIT GRID TAPE AND DRYVIT BACKSTOP NT-TEXTURE MAY ALSO BE APPLIED AT THE SILL PRIOR TO DRYVIT AQUAFASH APPLICATION.
3. APPLY DRYVIT AQUAFASH AT SILL, INCLUDING CORNER SPLICES.
4. INSTALL WINDOW UNIT AND ASSOCIATED FLASHINGS PER MANUFACTURER'S RECOMMENDATIONS, CODE REQUIREMENTS AND PROJECT DOCUMENTS.
5. APPLY DRYVIT BACKSTOP NT- SMOOTH OR TEXTURE OVER REMAINDER OF WALL SURFACE, IF REQUIRED.
6. AS AN ALTERNATIVE TO BACKSTOP NT A SHEET TYPE BREATHER MEMBRANES MAY BE USED AND SHALL BE INSTALLED IN A WEATHER BOARD FASHION IN ACCORDANCE WITH CODE AND MANUFACTURER'S REQUIREMENTS

The architecture, engineering and design of the project using the Dryvit products is the responsibility of the project's design professional. All systems must comply with local building codes and standards. This detail is for general information and guidance only and Dryvit specifically disclaims any liability for the use of this detail and for the architecture, design, engineering or workmanship of any project. The project design professional determines, in its sole discretion, whether this detail or a functionally equivalent alternative is best suited for the project. Use of a functionally equivalent detail does not violate Dryvit's warranty. This detail is subject to change without notice. Contact Dryvit to insure you have the most recent version.



APPROVED BY:	REV:	DATE:
AW	0	05.05.17



Outsulation Rail System

Opening Prep- Aquaflash Option

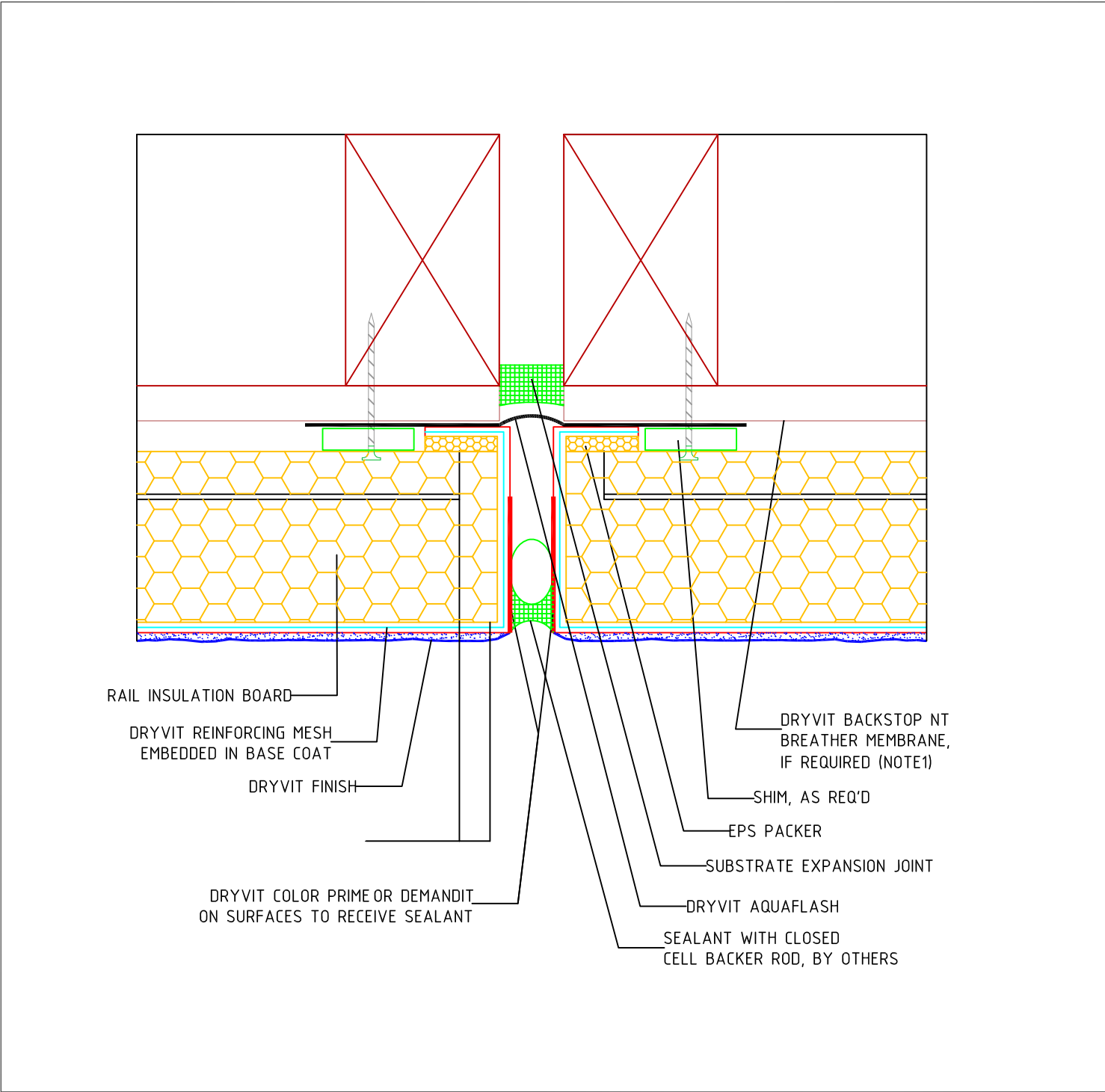
NOTE:

1. AS AN ALTERNATIVE TO BACKSTOP NT A SHEET TYPE BREATHER MEMBRANES MAY BE USED AND SHALL BE INSTALLED IN A WEATHER BOARD FASHION IN ACCORDANCE WITH CODE AND MANUFACTURER'S REQUIREMENTS
2. DRYVIT OPENING WRAP SHALL EXTEND TO INTERIOR FACE OF FRAMING
3. APPLY DRYVIT BACKSTOP NT- SMOOTH OR TEXTURE OVER REMAINDER OF WALL SURFACE, IF REQUIRED.

The architecture, engineering and design of the project using the Dryvit products is the responsibility of the project's design professional. All systems must comply with local building codes and standards. This detail is for general information and guidance only and Dryvit specifically disclaims any liability for the use of this detail and for the architecture, design, engineering or workmanship of any project. The project design professional determines, in its sole discretion, whether this detail or a functionally equivalent detail is best suited for the project. Use of a functionally equivalent detail does not violate Dryvit's warranty. This detail is subject to change without notice. Contact Dryvit to insure you have the most recent version.

APPROVED BY:	REV:	DATE:
AW	0	05.05.17





Outsulation Rail System Expansion Joint

Expansion Joint

NOTES:

1. AS AN ALTERNATIVE TO BACKSTOP NT A SHEET TYPE BREATHER MEMBRANES MAY BE USED AND SHALL BE INSTALLED IN A WEATHER BOARD FASHION IN ACCORDANCE WITH CODE AND MANUFACTURER'S REQUIREMENTS

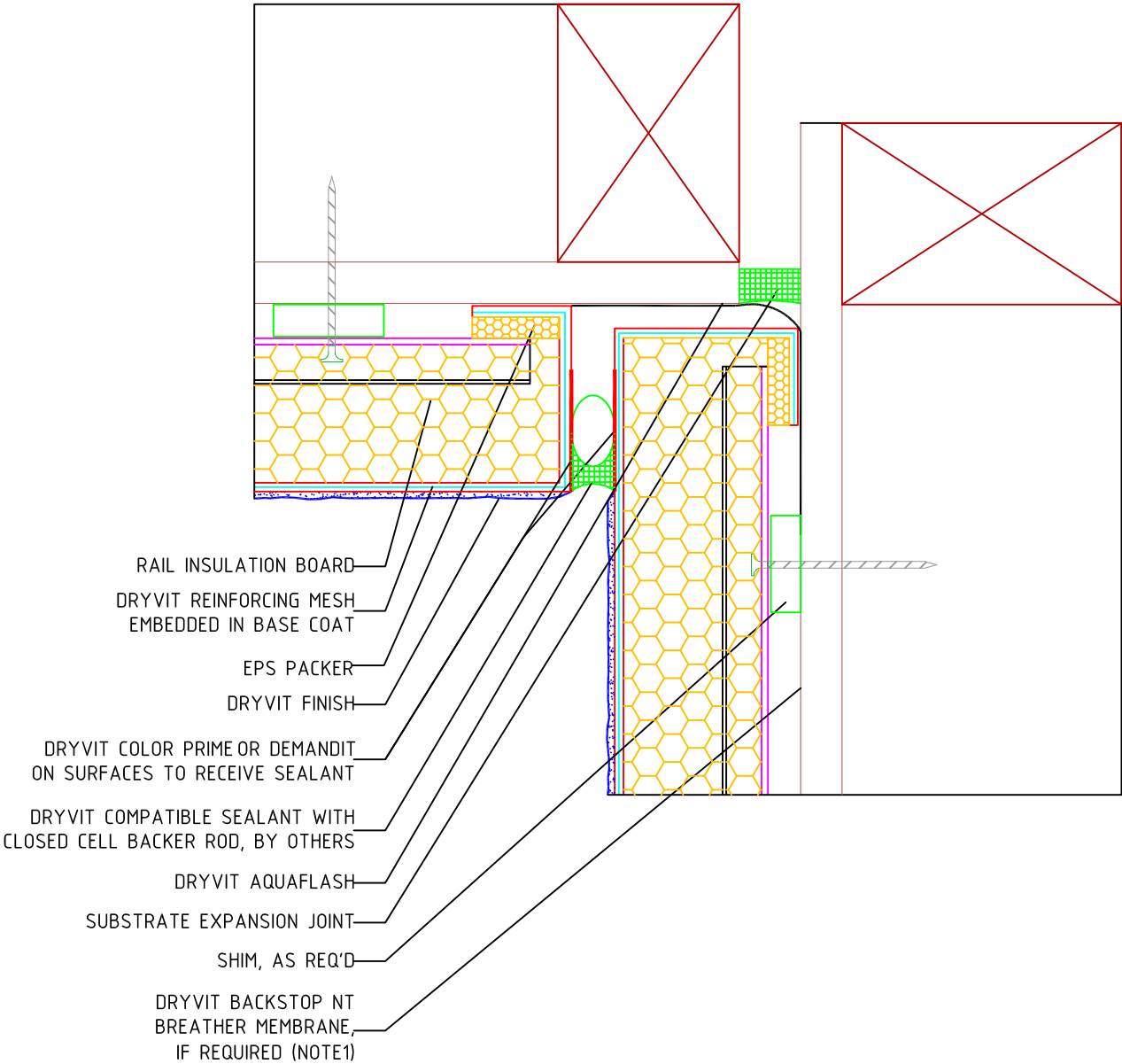
The architecture, engineering and design of the project using the Dryvit products is the responsibility of the project's design professional. All systems must comply with local building codes and standards. This detail is for general information and guidance only and Dryvit specifically disclaims any liability for the use of this detail and for the architecture, design, engineering or workmanship any project. The project design professional determines, in its sole discretion, whether this detail or a functionally equivalent alternative is best suited for the project. Use of a functionally equivalent detail does not violate Dryvit's warranty. This detail is subject to change without notice. Contact Dryvit to insure you have the most recent version.

1. AS AN ALTERNATIVE TO BACKSTOP NT A SHEET TYPE BREATHER MEMBRANES MAY BE USED AND SHALL BE INSTALLED IN A WEATHER BOARD FASHION IN ACCORDANCE WITH CODE AND MANUFACTURER'S REQUIREMENTS

The architecture, engineering and design of the project using the Dryvit products is the responsibility of the project's design professional. All systems must comply with local building codes and standards. This detail is for general information and guidance only and Dryvit specifically disclaims any liability for the use of this detail and for the architecture, design, engineering or workmanship of any project. The project design professional determines, in its sole discretion, whether this detail or a functionally equivalent alternative is best suited for the project. Use of a functionally equivalent detail does not violate Dryvit's warranty. This detail is subject to change without notice. Contact Dryvit to Insure you have the most recent version.



APPROVED BY:	REV:	DATE:
AW	0	05.05.17



Outsulation Rail System

Expansion Joint At Corner

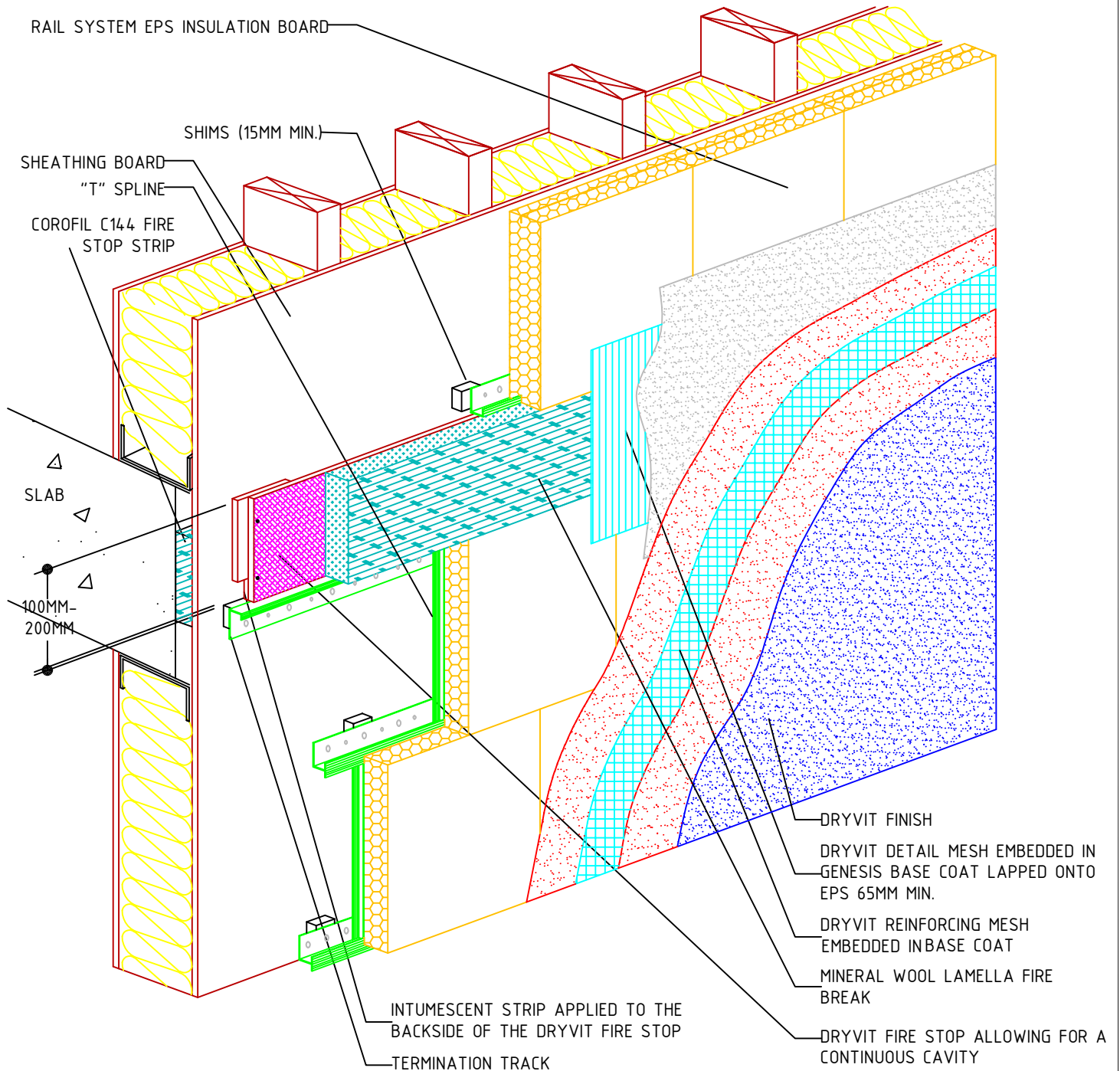
NOTES:

- 1. AS AN ALTERNATIVE TO BACKSTOP NT A SHEET TYPE BREATHER MEMBRANES MAY BE USED AND SHALL BE INSTALLED IN A WEATHER BOARD FASHION IN ACCORDANCE WITH CODE AND MANUFACTURER'S REQUIREMENTS

The architecture, engineering and design of the project using the Dryvit products is the responsibility of the project's design professional. All systems must comply with local building codes and standards. This detail is for general information and guidance only and Dryvit specifically disclaims any liability for the use of this detail and for the architecture, design, engineering or workmanship of any project. The project design professional determines, in its sole discretion, whether this detail or a functionally equivalent alternative is best suited for the project. Use of a functionally equivalent detail does not violate Dryvit's warranty. This detail is subject to change without notice. Contact Dryvit to insure you have the most recent version.

APPROVED BY:	REV:	DATE:
AW	0	05.05.17





Outsulation Rail System

Fire Barrier Detail-Dryvit Fire Stop Cutaway

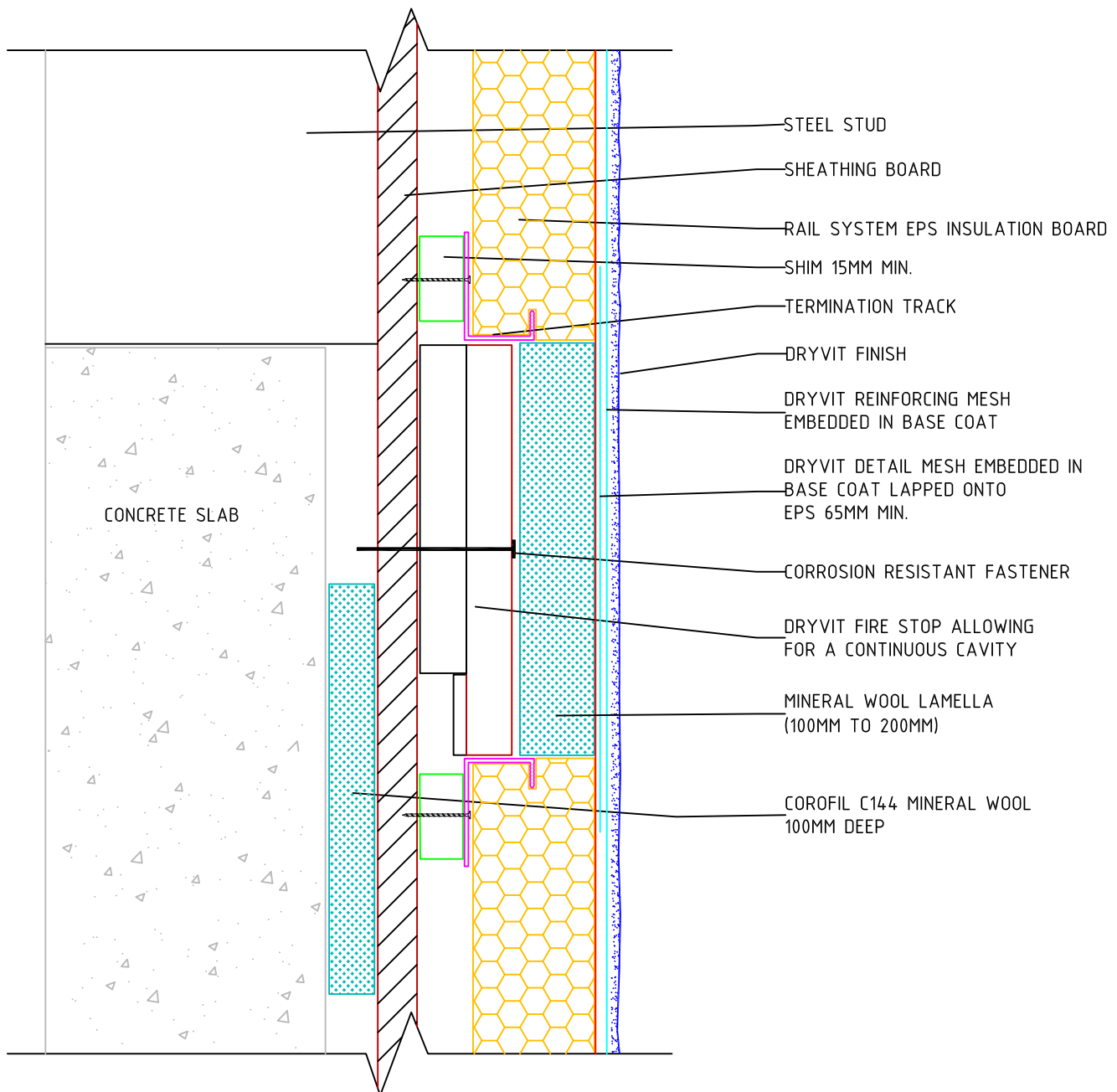
NOTE:

1.

The architecture, engineering and design of the project using the Dryvit products is the responsibility of the project's design professional. All systems must comply with local building codes and standards. This detail is for general information and guidance only and Dryvit specifically disclaims any liability for the use of this detail and for the architecture, design, engineering or workmanship of any project. The project design professional determines, in its sole discretion, whether this detail or a functionally equivalent alternative is best suited for the project. Use of a functionally equivalent detail does not violate Dryvit's warranty. This detail is subject to change without notice. Contact Dryvit to insure you have the most recent version.

APPROVED BY:	REV:	DATE:
AW	0	05.05.17





Outsulation Rail System

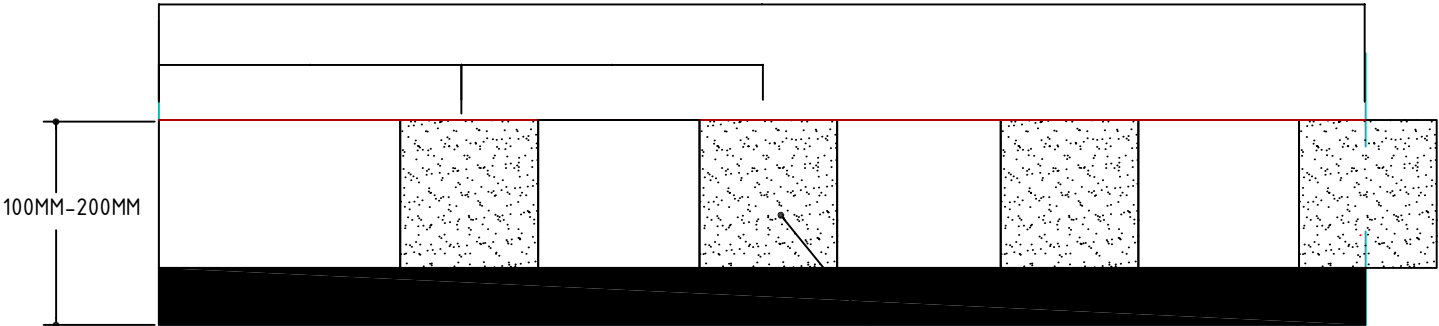
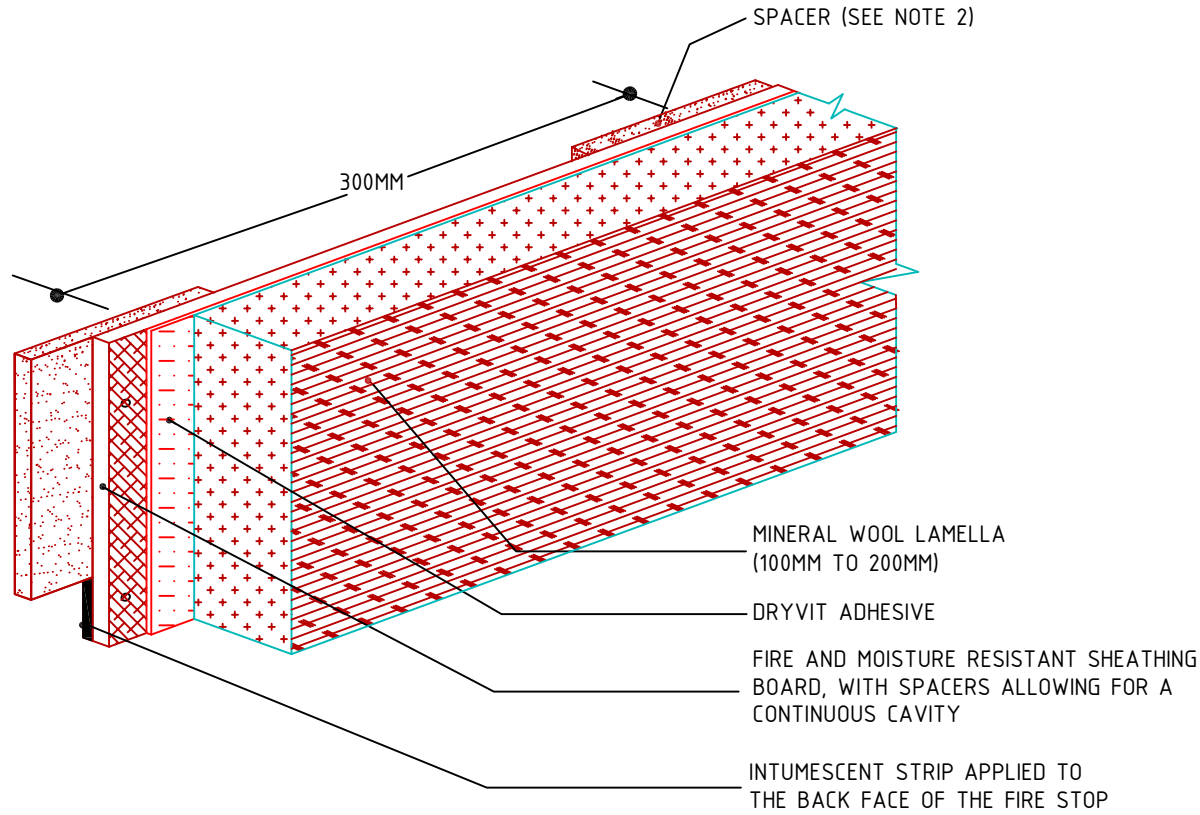
Fire Barrier With Dryvit Fire Stop

NOTE:
1.

The architecture, engineering and design of the project using the Dryvit products is the responsibility of the project's design professional. All systems must comply with local building codes and standards. This detail is for general information and guidance only and Dryvit specifically disclaims any liability for the use of this detail and for the architecture, design, engineering or workmanship of any project. The project design professional determines, in its sole discretion, whether this detail or a functionally equivalent alternative is best suited for the project. Use of a functionally equivalent detail does not violate Dryvit's warranty. This detail is subject to change without notice. Contact Dryvit to insure you have the most recent version.

APPROVED BY:	REV:	DATE:
AW	0	05.05.17

ISOMETRIC FRONT VIEW OF DRYVIT FIRE STOP



REAR VIEW OF DRYVIT FIRE STOP

Outsulation Rail System

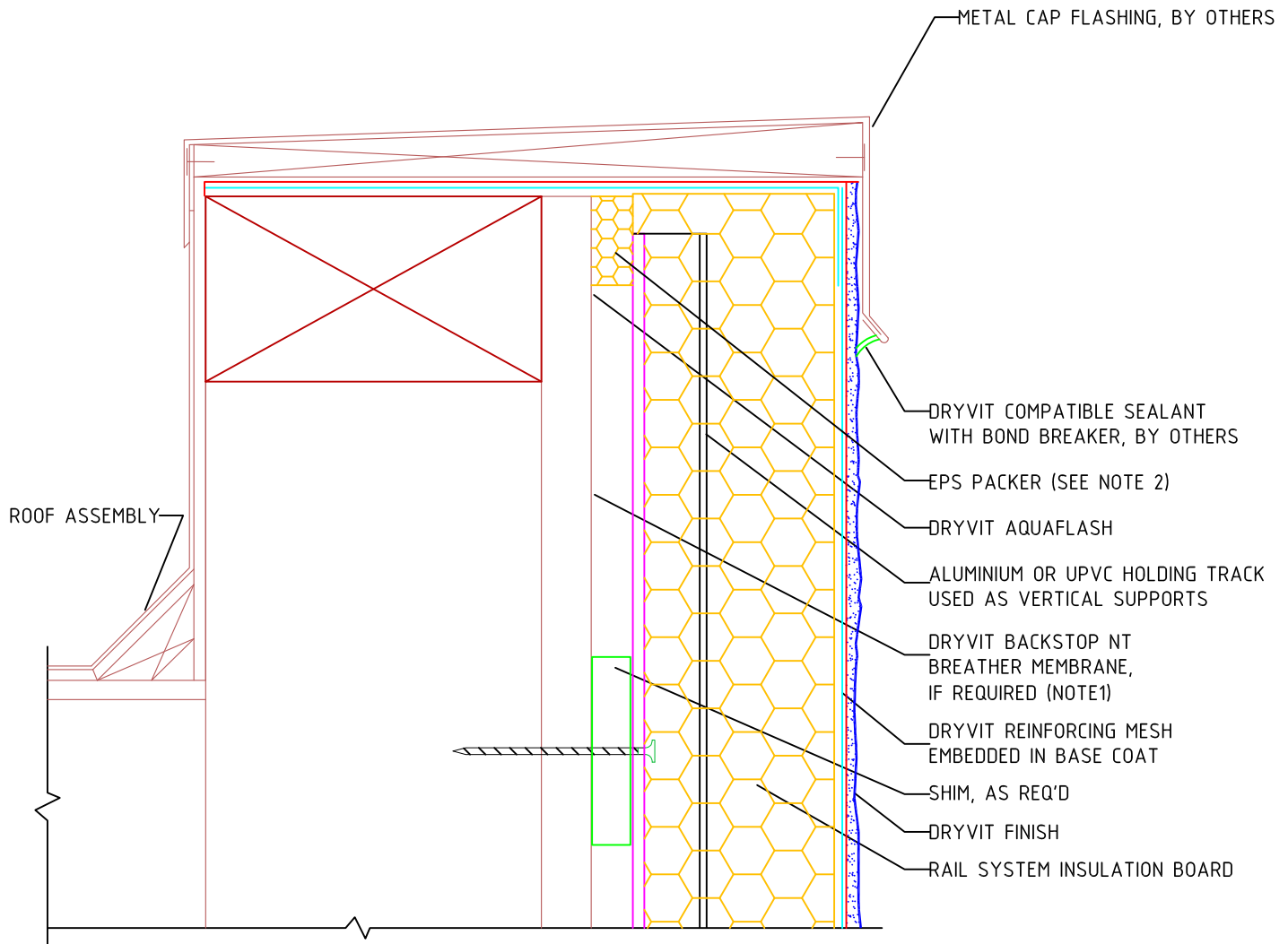
Dryvit Fire Stop

- NOTES:
1. SPACER DIMENSIONS 70MM x 70MM x 16MM

The architecture, engineering and design of the project using the Dryvit products is the responsibility of the project's design professional. All systems must comply with local building codes and standards. This detail is for general information and guidance only and Dryvit specifically disclaims any liability for the use of this detail and for the architecture, design, engineering or workmanship of any project. The project design professional determines, in its sole discretion, whether this detail or a functionally equivalent alternative is best suited for the project. Use of a functionally equivalent detail does not violate Dryvit's warranty. This detail is subject to change without notice. Contact Dryvit to insure you have the most recent version.



APPROVED BY:	REV:	DATE:
AW	0	05.05.17



Outsulation Rail System

Parapet- Cap Flashing

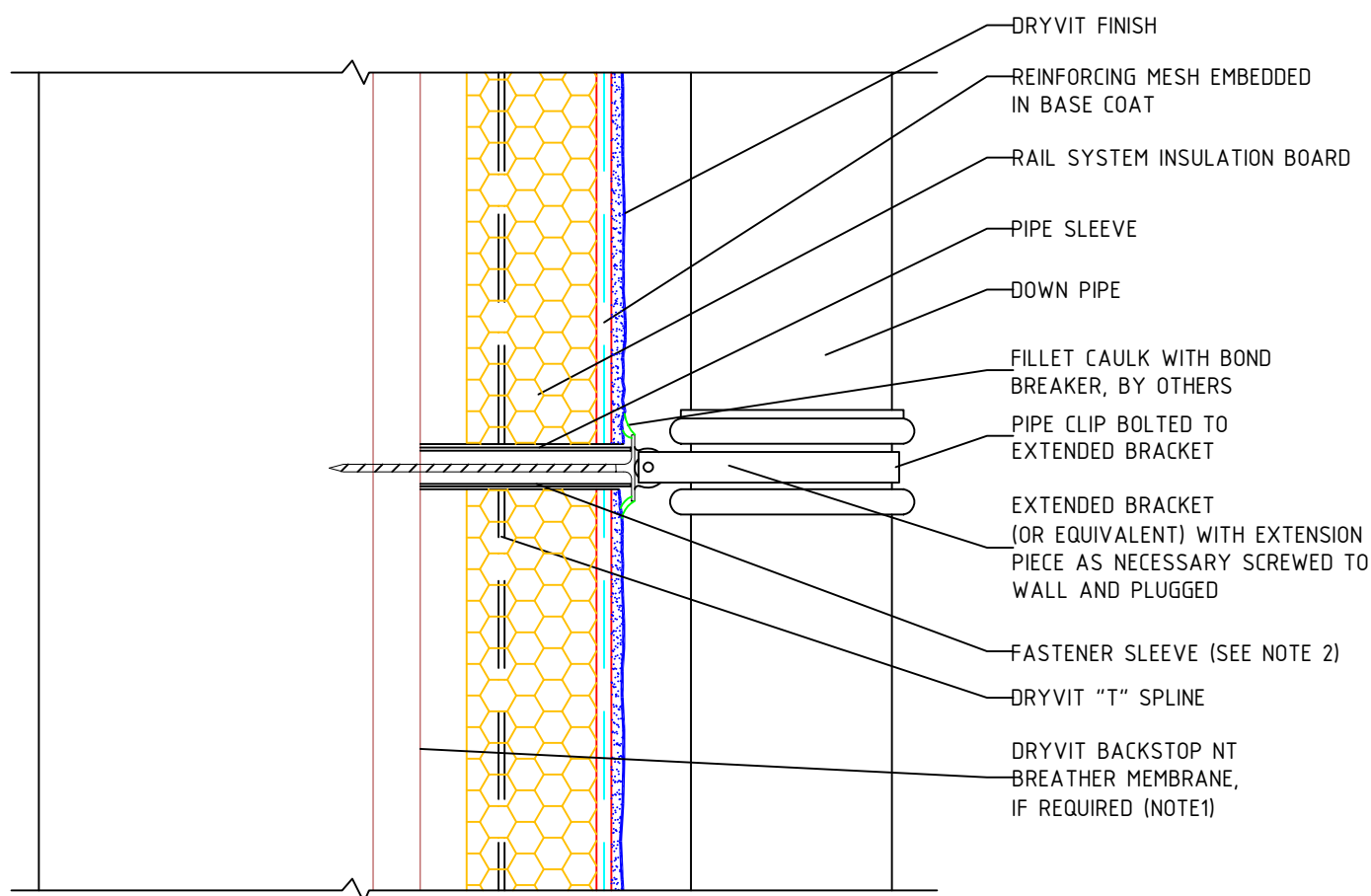
NOTES:

1. AS AN ALTERNATIVE TO BACKSTOP NT A SHEET TYPE BREATHER MEMBRANES MAY BE USED AND SHALL BE INSTALLED IN A WEATHER BOARD FASHION IN ACCORDANCE WITH CODE AND MANUFACTURER'S REQUIREMENTS
2. TIMBER FRAMED CONSTRUCTION MAY NEED TO BE VENTED DEPENDING ON REQUIRMENTS, CONSULT MANUFACTURER FOR RECOMMENDATIONS

The architecture, engineering and design of the project using the Dryvit products is the responsibility of the project's design professional. All systems must comply with local building codes and standards. This detail is for general information and guidance only and Dryvit specifically disclaims any liability for the use of this detail and for the architecture, design, engineering or workmanship of any project. The project design professional determines, in its sole discretion, whether this detail or a functionally equivalent alternative is best suited for the project. Use of a functionally equivalent detail does not violate Dryvit's warranty. This detail is subject to change without notice. Contact Dryvit to insure you have the most recent version.

APPROVED BY:	REV:	DATE:
AW	0	05.05.17





Outsulation Rail System

Down Pipe Support Penetration

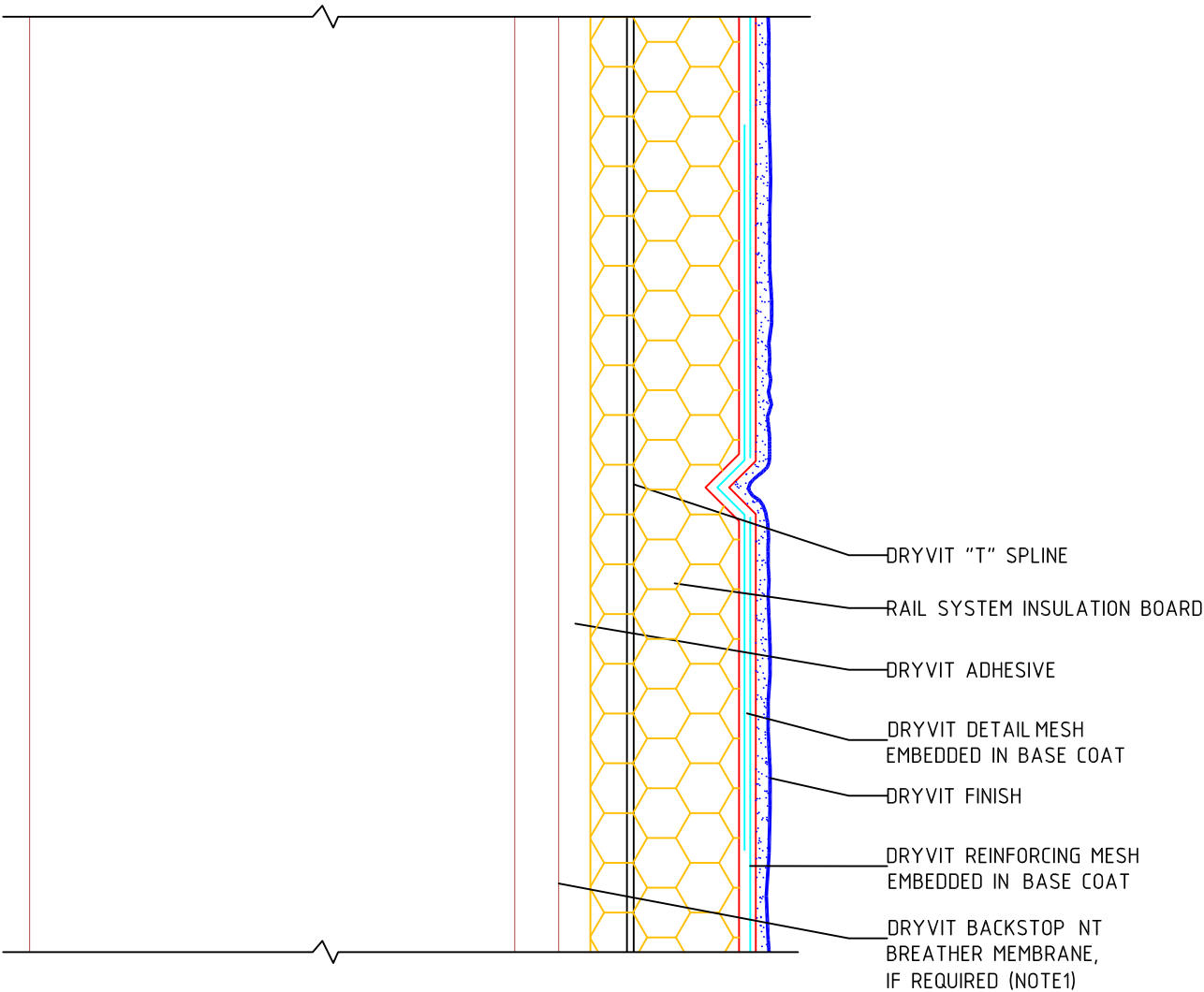
NOTES:

1. AS AN ALTERNATIVE TO BACKSTOP NT A SHEET TYPE BREATHER MEMBRANES MAY BE USED AND SHALL BE INSTALLED IN A WEATHER BOARD FASHION IN ACCORDANCE WITH CODE AND MANUFACTURER'S REQUIREMENTS
2. FASTENER SLEEVE SHOULD BE FIXED TO SUPPORT STRUCTURE i.e. LIGHT WEIGHT STEEL STUD. SHEATHING BOARD SHOULD NOT BE USED AS THE SOLE MEANS OF FIX

The architecture, engineering and design of the project using the Dryvit products is the responsibility of the project's design professional. All systems must comply with local building codes and standards. This detail is for general information and guidance only and Dryvit specifically disclaims any liability for the use of this detail and for the architecture, design, engineering or workmanship of any project. The project design professional determines, in its sole discretion, whether this detail or a functionally equivalent alternative is best suited for the project. Use of a functionally equivalent detail does not violate Dryvit's warranty. This detail is subject to change without notice. Contact Dryvit to insure you have the most recent version.



APPROVED BY:	REV:	DATE:
AW	0	05.05.17



Outsulation Rail System

Typical Aesthetic Reveals

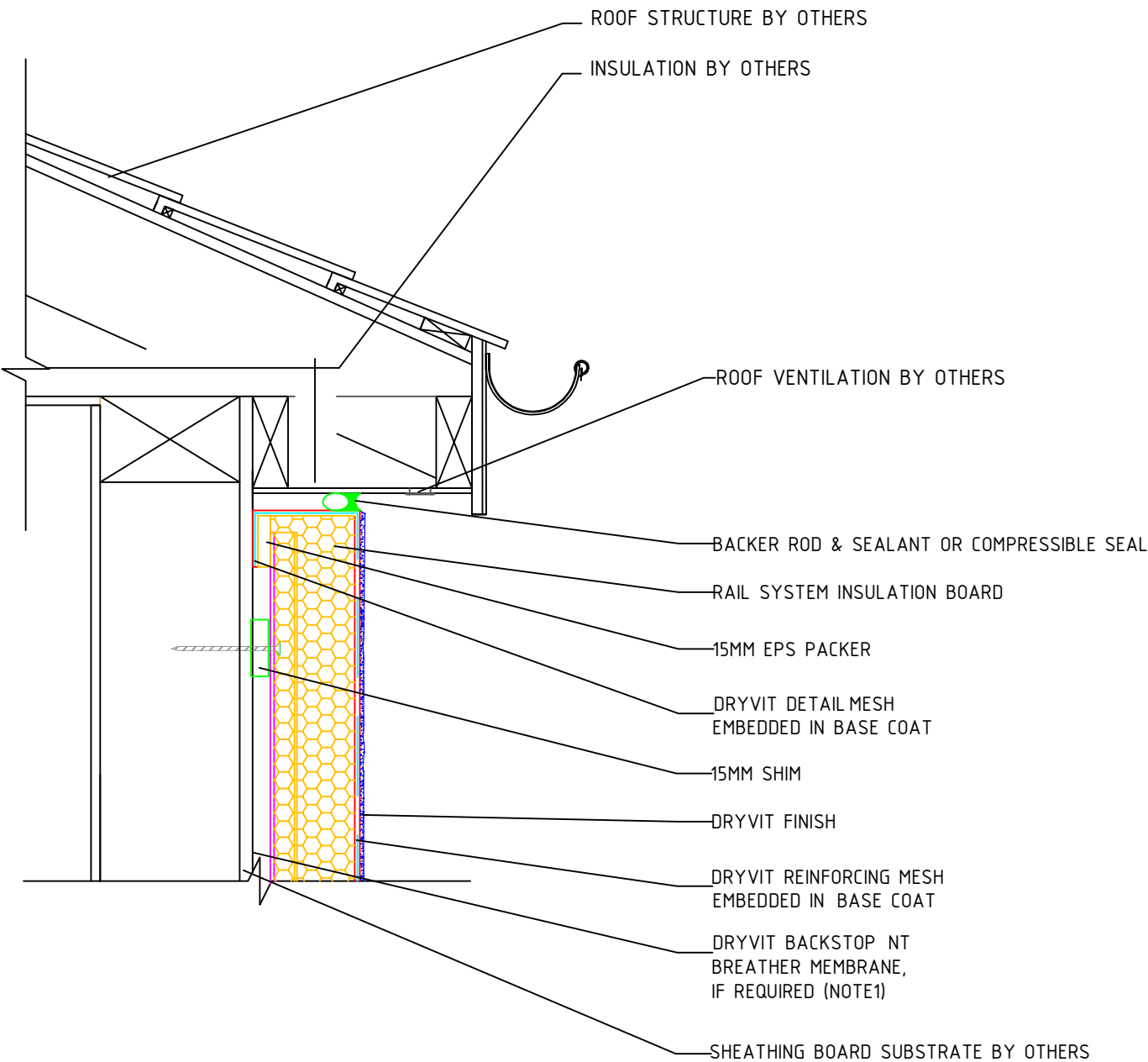
NOTES:

1. AS AN ALTERNATIVE TO BACKSTOP NT A SHEET TYPE BREATHER MEMBRANES MAY BE USED AND SHALL BE INSTALLED IN A WEATHER BOARD FASHION IN ACCORDANCE WITH CODE AND MANUFACTURER'S REQUIREMENTS

The architecture, engineering and design of the project using the Dryvit products is the responsibility of the project's design professional. All systems must comply with local building codes and standards. This detail is for general information and guidance only and Dryvit specifically disclaims any liability for the use of this detail and for the architecture, design, engineering or workmanship of any project. The project design professional determines, in its sole discretion, whether this detail or a functionally equivalent alternative is best suited for the project. Use of a functionally equivalent detail does not violate Dryvit's warranty. This detail is subject to change without notice. Contact Dryvit to insure you have the most recent version.

APPROVED BY:	REV:	DATE:
AW	0	05.05.17





Outsulation Rail System

Roof Termination - Overhanging Soffit

NOTE:
1. DRYVIT RECOMMENDS THAT GROUND FLOOR APPLICATIONS AND ALL FACADES EXPOSED TO ABNORMAL STRESS, HIGH TRAFFIC, OR DELIBERATE IMPACT HAVE THE BASE COAT REINFORCED WITH A PANZER® MESH PRIOR TO STANDARD PLUS™ MESH. LOCATION OF HIGH IMPACT ZONES SHOULD BE INDICATED ON CONTRACT DRAWINGS.

The architecture, engineering and design of the project using the Dryvit products is the responsibility of the project's design professional. All systems must comply with local building codes and standards. This detail is for general information and guidance only and Dryvit specifically disclaims any liability for the use of this detail and for the architecture, design, engineering or workmanship of any project. The project design professional determines, in its sole discretion, whether this detail or a functionally equivalent alternative is best suited for the project. Use of a functionally equivalent detail does not violate Dryvit's warranty. This detail is subject to change without notice. Contact Dryvit to insure you have the most recent version.

APPROVED BY:	REV:	DATE:
AW	0	05.05.17

